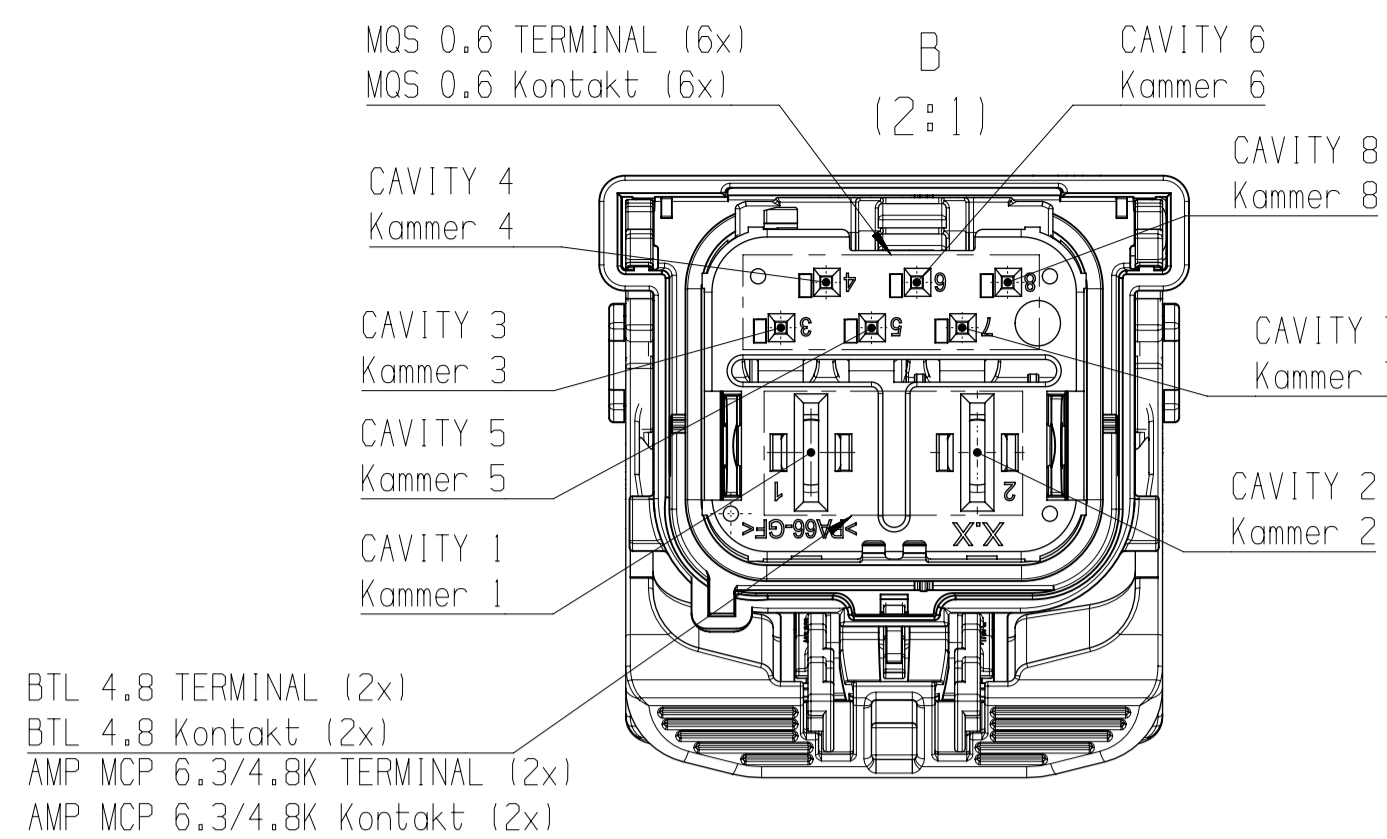


CORRESPONDING DOCUMENTS / Zugehörige Dokumente	
TECHNICAL CUSTOMER INFORMATION Technische Kundenunterlage	1 928 A03 98T
FINAL CHECK INSTRUCTION Endprüfvorschrift	1 928 A00 51E
CORRESPONDING INTERFACE DRAWING Zugehörige Schnittstellenzeichnung	0 261 A01 354
OFFER DRAWING BTL 4.8 Angebotszeichnung BTL 4.8	1 928 A00 393
OFFER DRAWING AMP MCP 6.3/4.8K Angebotszeichnung AMP MCP 6.3/4.8K	124143B Rev. A12
OFFER DRAWING MOS 0.6 Angebotszeichnung MOS 0.6	929454 Rev. C15

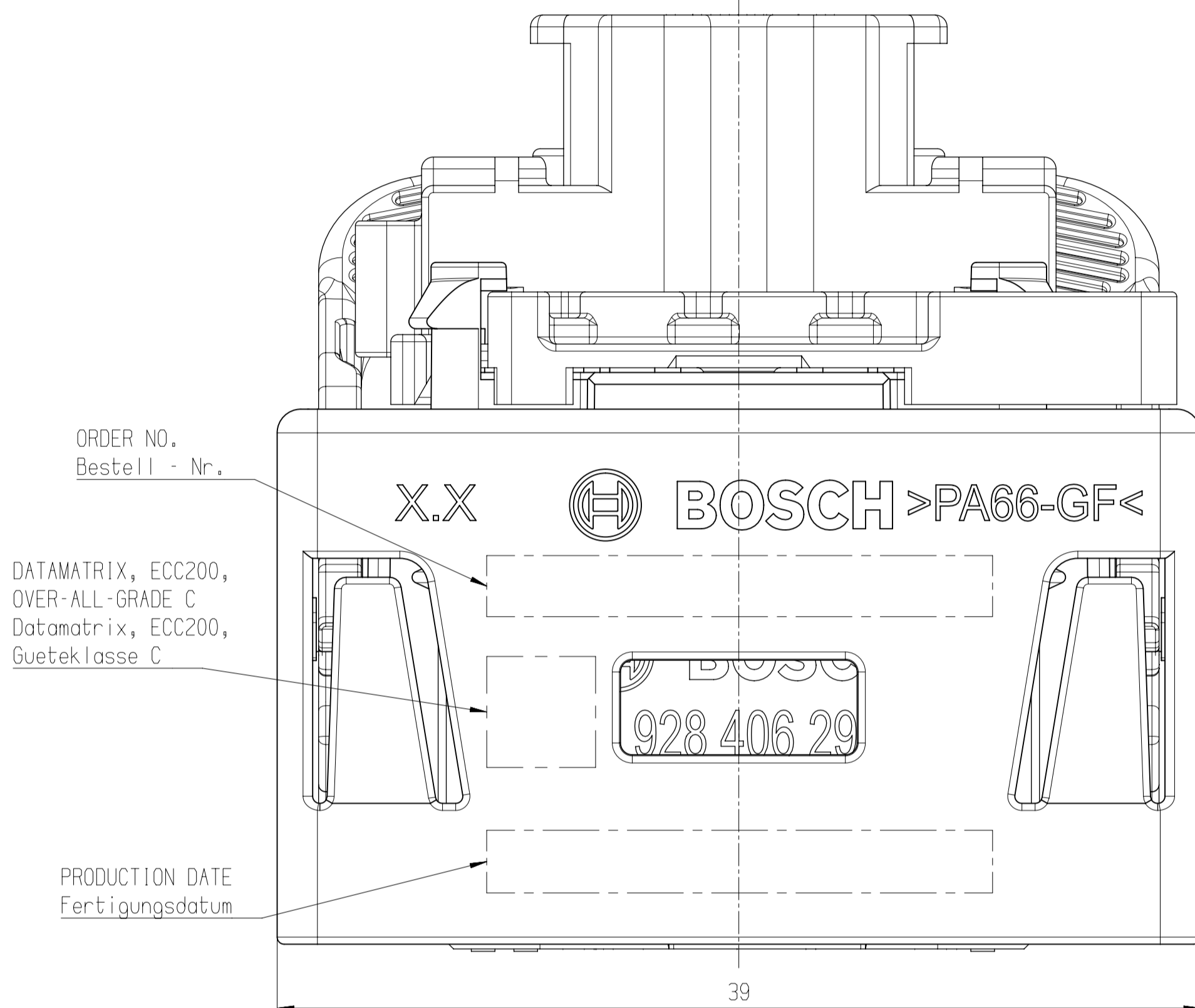
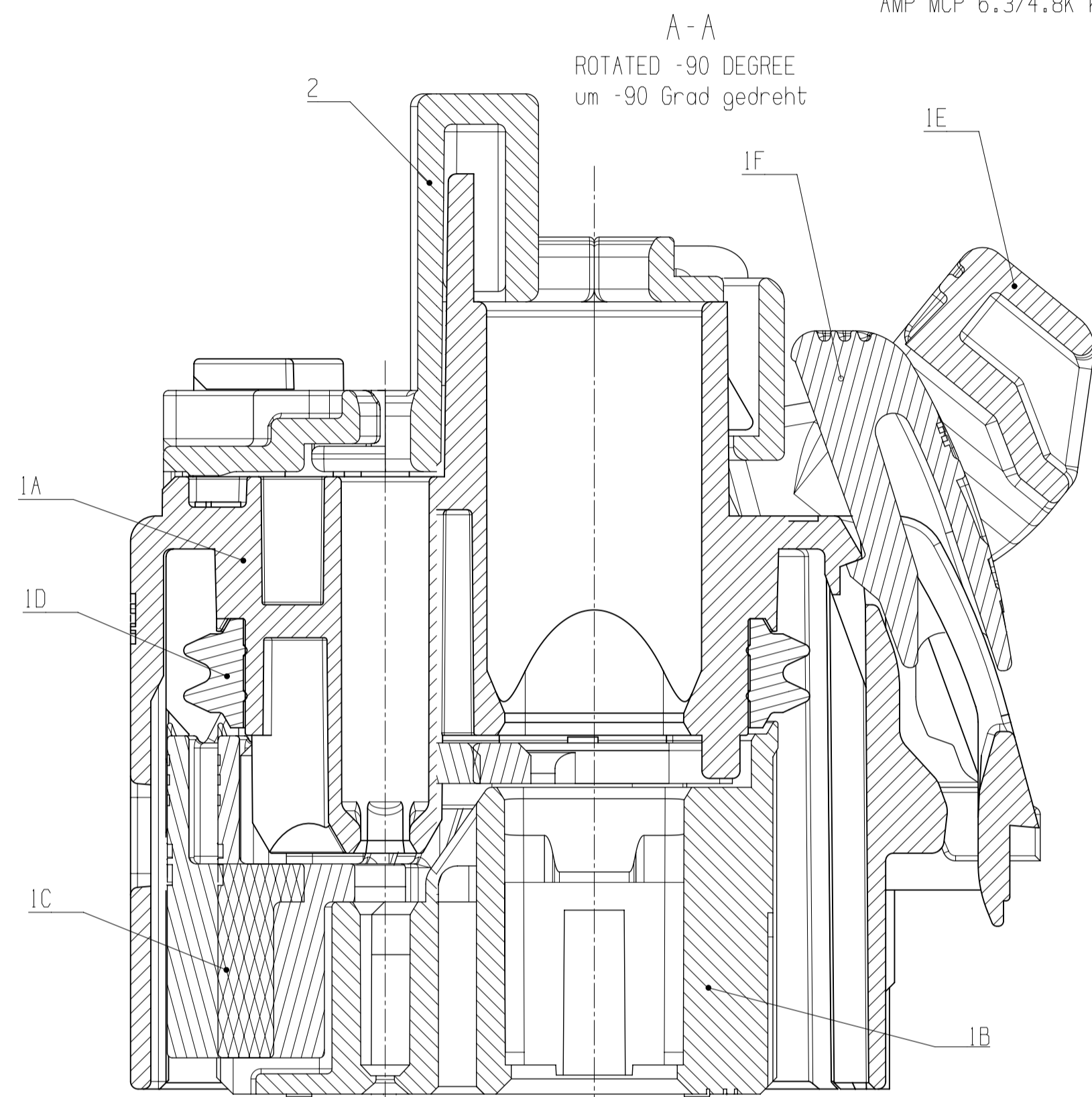


BTL 4.8 TERMINAL (2x)  
BTL 4.8 Kontakt (2x)  
AMP MCP 6.3/4.8K TERMINAL (2x)  
AMP MCP 6.3/4.8K Kontakt (2x)

DEFINITION OF CABLE EXIT  
Definition von Kabelabgang

CABLE EXIT ON THE TOP  
Kabelabgang oben

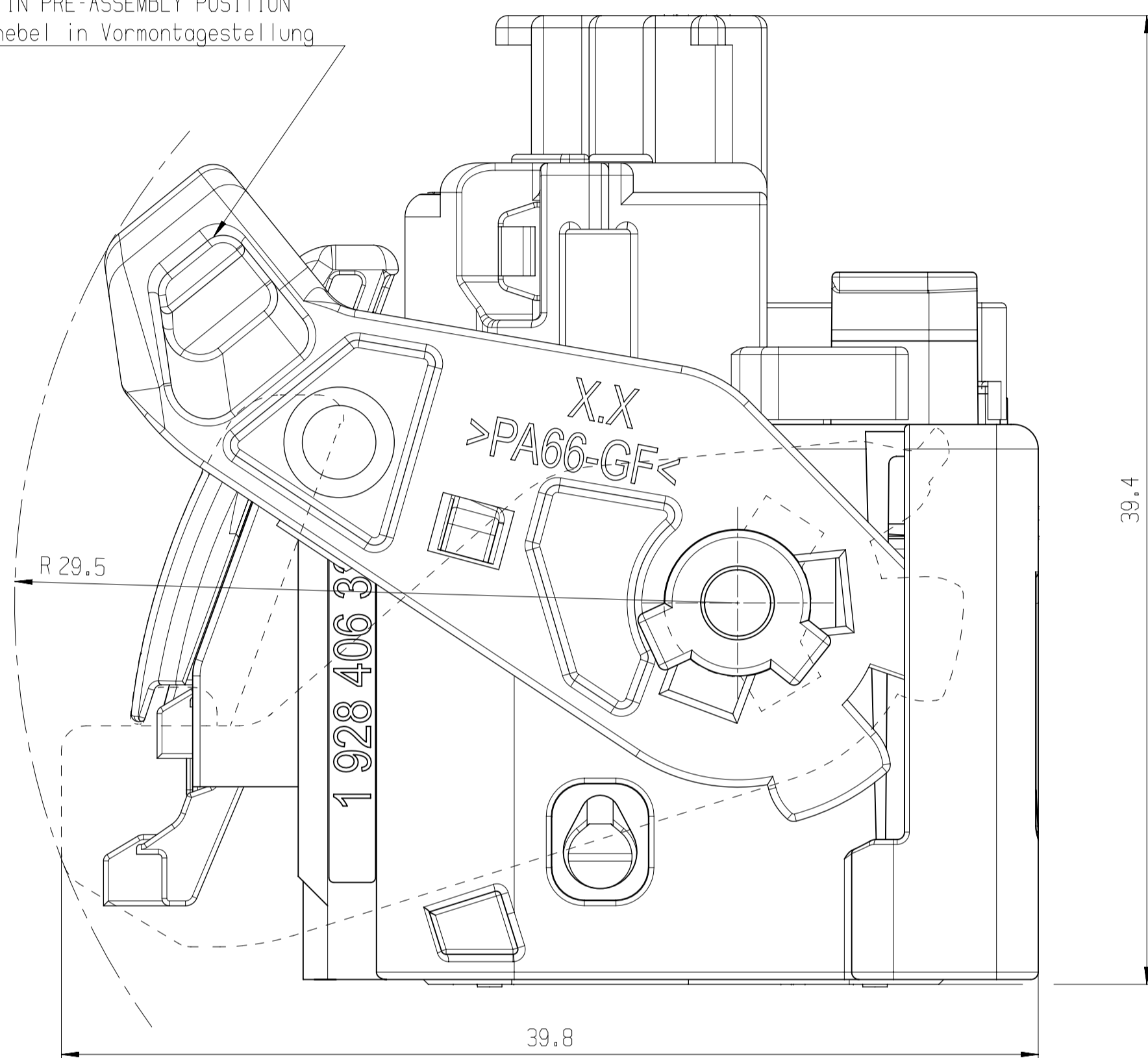
	ⓐ	ⓑ	ⓒ	ⓓ
CODING Kodierung	A	B	C	D
COLOR Farbe	BLACK / schwarz	WHITE / weiss	BLUE / blau	VIOLET / violett
CODING VARIANTS Kodierungsvariante	11.4 1:1	1:1 11.4	1:1 8.6	1:1 8.6
SIMPLIFIED PRESENTED vereinfacht dargestellt				



DATA MATRIX, ECC200,  
OVER-ALL-GRADE C  
Datamatrix, ECC200,  
Guete Klasse C

CODING INSCRIPTION  
Kodierungsbezeichnung

LOCKING LEVER IN PRE-ASSEMBLY POSITION  
Verriegelungshebel in Vormontagestellung



PARTS CAN BE DIFFERENT IN NON-FUNCTIONAL RELEVANT DETAILS (E.G.: INSCRIPTION) FROM THIS DRAWING.  
Teile koennen in nicht funktionsrelevanten Details (z.B. Beschriftung) von der Darstellung in dieser Zeichnung abweichen.

DO NOT USE THIS DRAWING FOR DESIGN OR BUILD OF TOOL.  
Diese Zeichnung kann nicht fuer die Konstruktion oder Werkzeugerstellung verwendet werden.

GERMAN TEXT IS BINDING.  
Massgebend ist der deutsche Text.

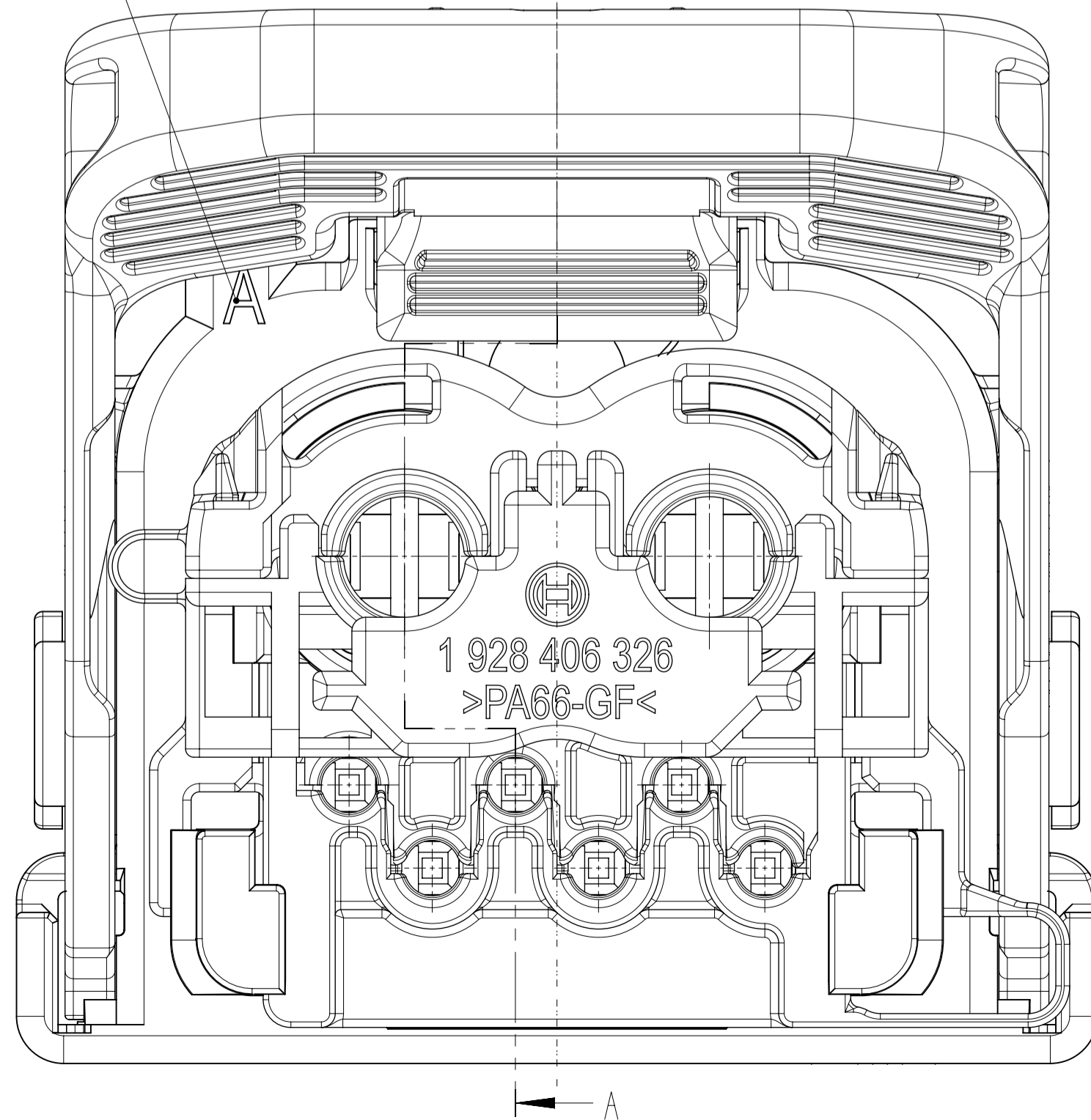
MODIFICATIONS RESERVED DUE TO FURTHER DEVELOPMENT.  
Aenderungen aufgrund der weiteren Entwicklung vorbehalten.

INCIDENCE OF '1' MM PER SIDE IS PERMITTED.  
Einfall von '1' mm je Seite ist erlaubt.

CALCULATION OF WEIGHT ON THE BASE OF 3D DATA  
Gewichtsberechnung anhand 3D Daten

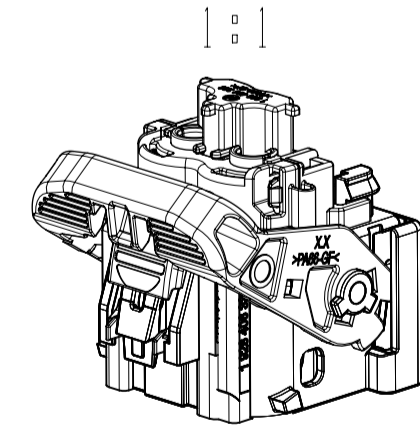
ITEM Pos.	DESIGNATION Benennung	CODING Kodierung	TOOL INSERT EXISTING Wechseleinsatz vorhanden	OFFER DRAWING Angebotszeichnung	ORDER NUMBER Bestellnummer	SUPPLIER Lieferant
3	CABLE TIE Kabelbinder			C 265 152 006 A	1 928 401 713	BOSCH PS/SWW-CO
2	ENDCLIP Endclip			1 928 A00 818-000	1 928 C08 985* 1 928 406 326#	BOSCH PS/SWW-CO
1	CONTACT HOUSING UNIT VARIANT: LEVER WITHOUT CPA Kontakttraegeinheit variante: Hebel ohne CPA	Z				BOSCH PS/SWW-CO
		D				
		C				
1	CONTACT HOUSING UNIT VARIANT: LEVER WITH CPA Kontakttraegeinheit variante: Hebel mit CPA	Z				BOSCH PS/SWW-CO
		D				
		C				
1	CONTACT HOUSING UNIT VARIANT: LEVER WITH CPA Kontakttraegeinheit variante: Hebel mit CPA	B	○		1 928 A00 816-000	BOSCH PS/SWW-CO
		A	○		1 928 D03 489* 1 928 406 325#ⓐ 1 928 D03 472* 1 928 406 324#ⓐ	

\* PRE-PRODUCTION DEVELOPMENT NUMBER / Vorserien-Entwicklungsnummer  
# SERIES PARTS AVAILABLE FROM 07/2019 / Serienteil verfuegbar ab 07/2019



SHOWN: CODING A WITH CPA, 8-WAY  
Dargestellt: Kodierung A mit CPA, 8-polig

ITEM Pos.	DESIGNATION Benennung	MATERIAL Werkstoff	COLOR Farbe	WEIGHT(g) Gewicht(g)	REMARKS Bemerkung
2	ENDCLIP Endclip	PA66 GF	BLACK schwarz	2.5	
1F	CPA CPA	PA66 GF	RED rot		
1E	LEVER Hebel	PA66 GF	BLACK schwarz		
1D	RADIAL SEAL Radialdichtung	VMQ	ORANGE orange		
1C	SECONDARY LOCKING Sekundaerverriegelung	PA66 GF	LILAC lila	18.9	
1B	CONTACT HOUSING LOWER PART Kontakttraegerunterteil	PA66 GF	BLACK schwarz		
1A	CONTACT HOUSING UPPER PART Kontakttraegeroberteil	PA66 GF	SEE TABLE siehe Tabelle		



±mm	±mm	±5°
all linear dimensions in/ Alle Laengennosse in		
Size acc. to / Masse nach		
ISO 14405-1:2010-12		
envelope principle/ Huelprinzip		
drawing standard/ Zeichnungsstandard		
ISO Standard		

Lang./Spr.	Syst.	Ug	Scale/Vergr.	5:1	MNR	Doc. type	AGZ	1 928 A00 815-000	DP/10	001	08	Ind. Fomat	A1
<p>01 3E1001900 20190624 hds&amp;kr wdm3ba katlalc 209 PS-AM/ENC</p> <p>07 3E10020219 20190514 sse2fe wdm3ba katlalc 209 PS-AM/ENC</p> <p>06 3E10014041 20190405 sse2fe vlp2ba katlalc 209 PS-AM/ENC</p> <p>01 NEW EDITION 20161109 tar81hc hga2ju katlalc 209 G5-AM/ENC</p> <p>Ind. Change/Änd. YYYYMMDD Draw/Gez. Checked/Gepr. Releases/Freig. BWN Resp. dept./Verantw. Abt. Add. info./Zus. Info.</p> <p>PLUG-IN CONNECTOR STECHEVERBINDUNG</p> <p>8-WAY 8-polig</p> <p>Sheet/Bl. 1 / 2</p> <p>Repl. by ..</p>													

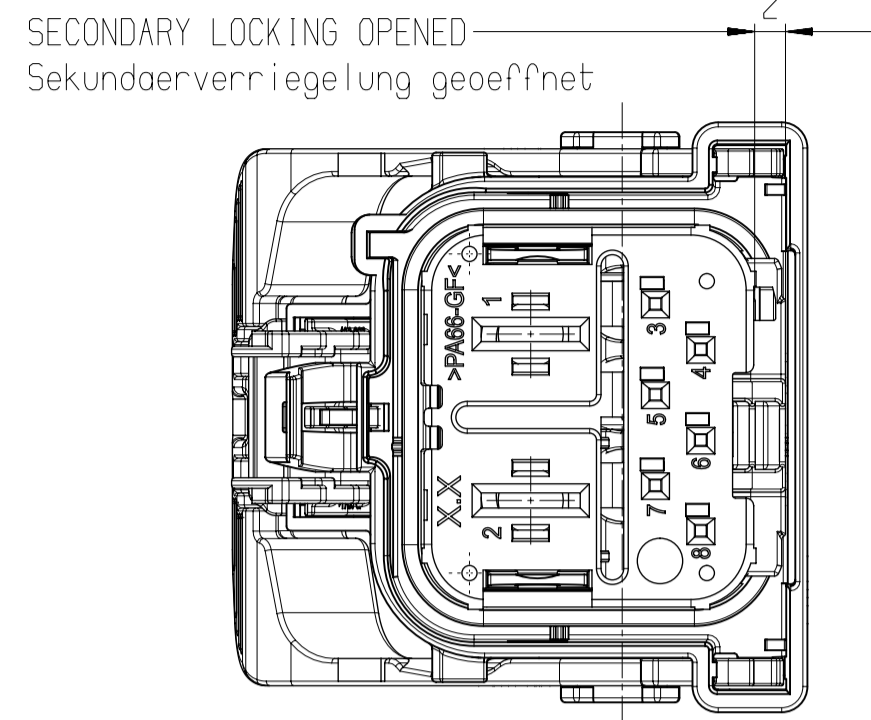
© Bosch Power Tools. All rights reserved. Also regarding the use of this drawing for the design or construction of tools. All other rights reserved.

DELIVERY CONDITION, PARTS HAVE TO BE ORDERED SEPARATELY.  
Lieferzustand, Teile sind einzeln zu bestellen.

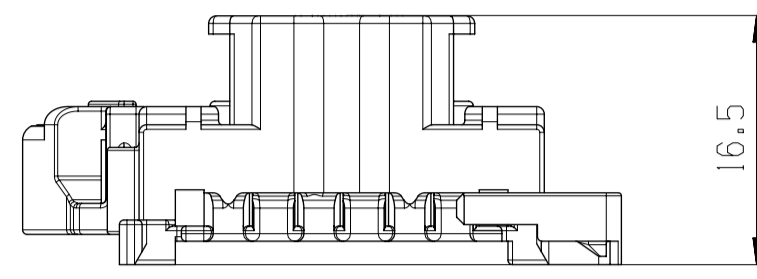
SHOWN / Dargestellt  
ITEM 1: CONTACT HOUSING UNIT CODE A  
Pos. 1: Kontakttroagereinheit Kodierung A

SHOWN / Dargestellt  
ITEM 2: ENDCLIP  
Pos. 2: Endclip

(2:1)

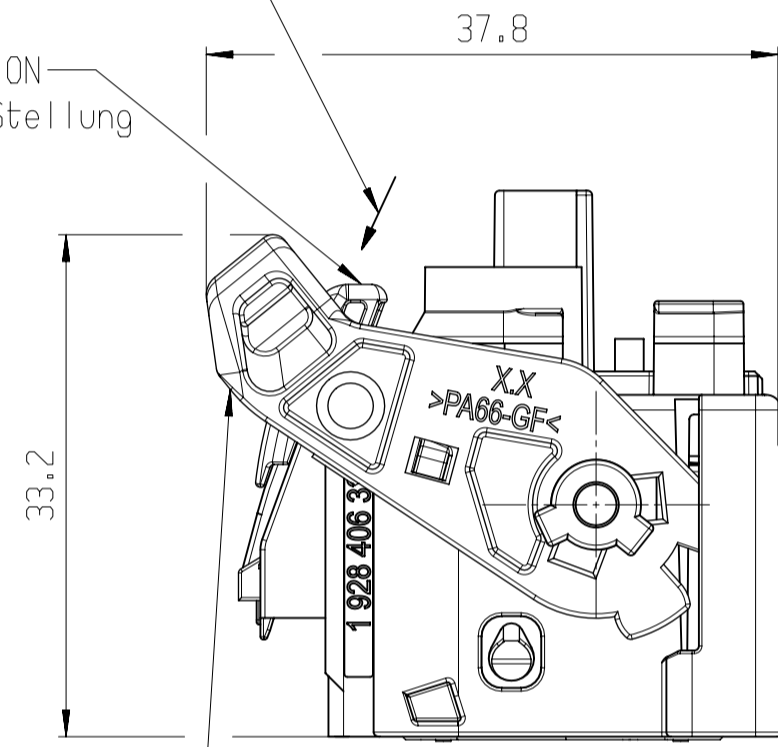


(2:1)



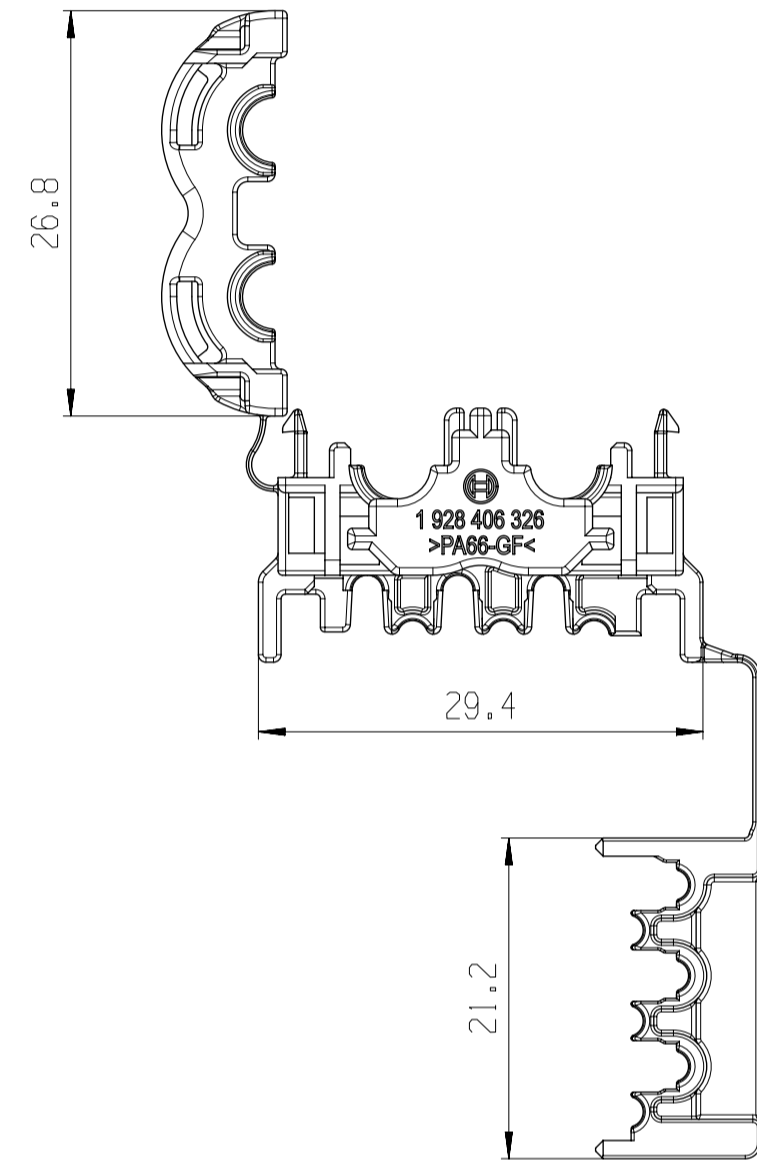
DIRECTION OF CPA ACTIVATION  
Betaetigungsrichtung CPA

CPA IN OPENED POSITION  
CPA in geoeffneter Stellung

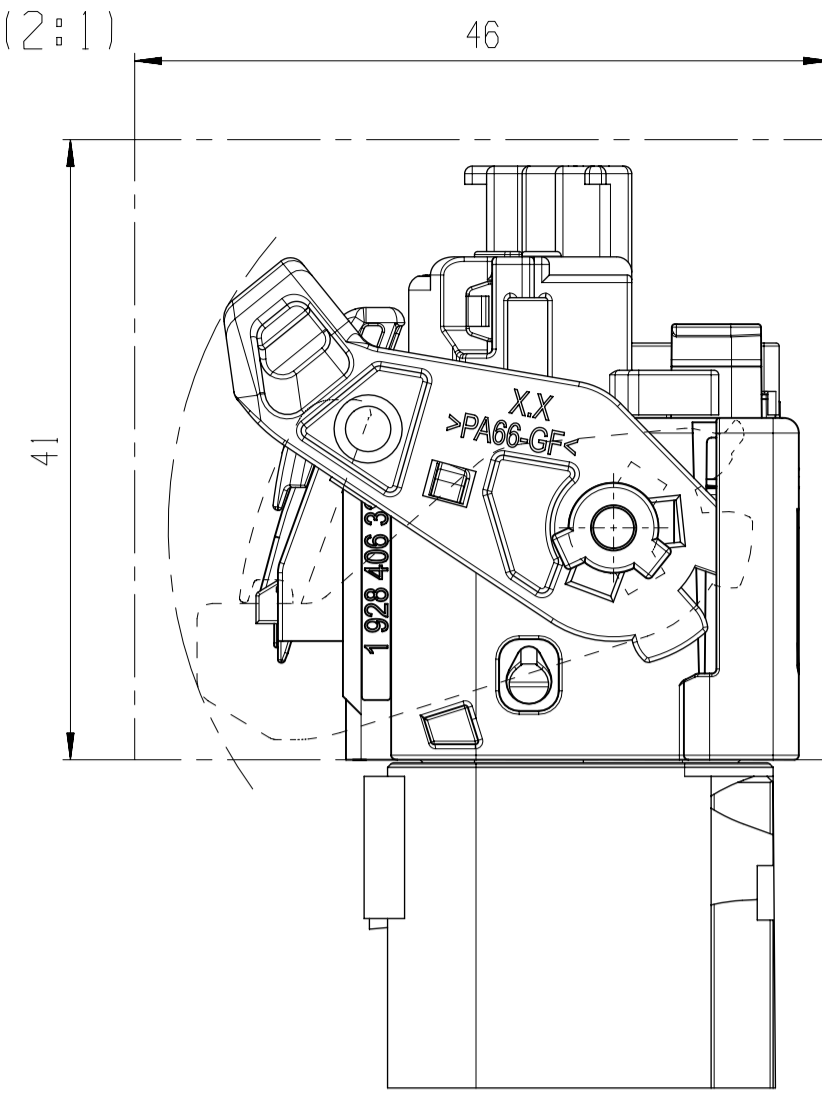


LEVER IN OPENED POSITION  
Hebel in geoeffneter Stellung

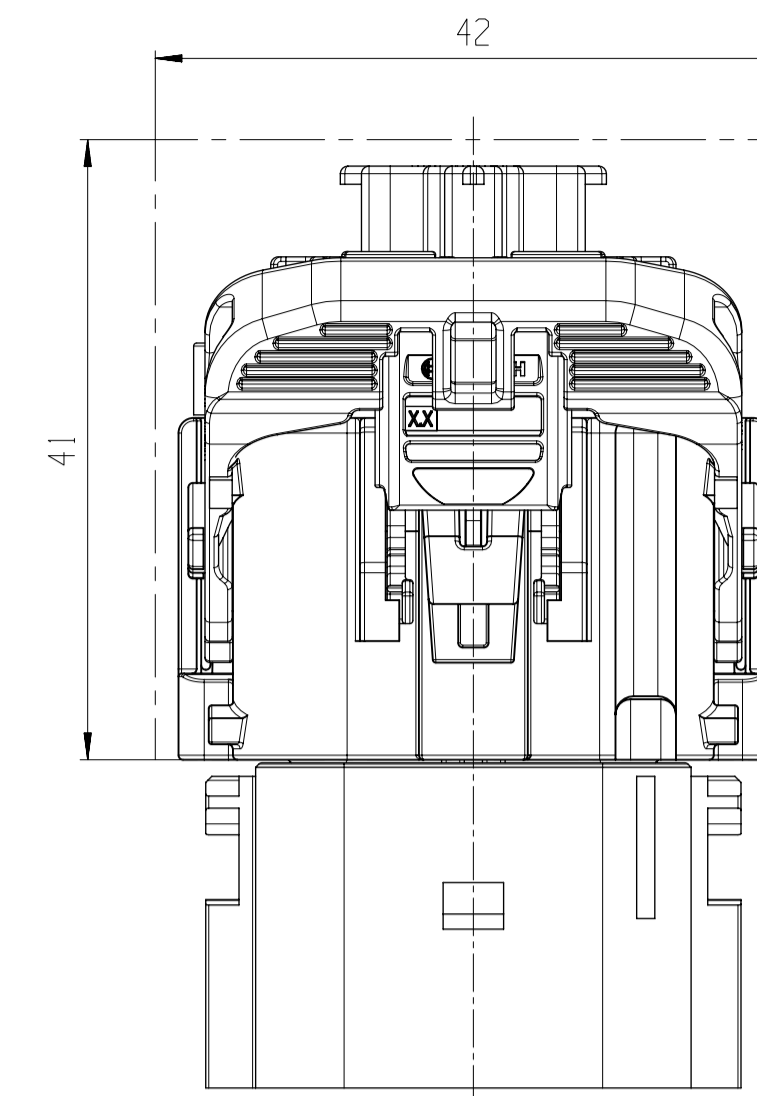
CPA CAN BE MOVED ONLY WHEN THE LEVER IS CLOSED.  
CPA kann nur bei geschlossenem Hebel bewegt werden.



(2:1)

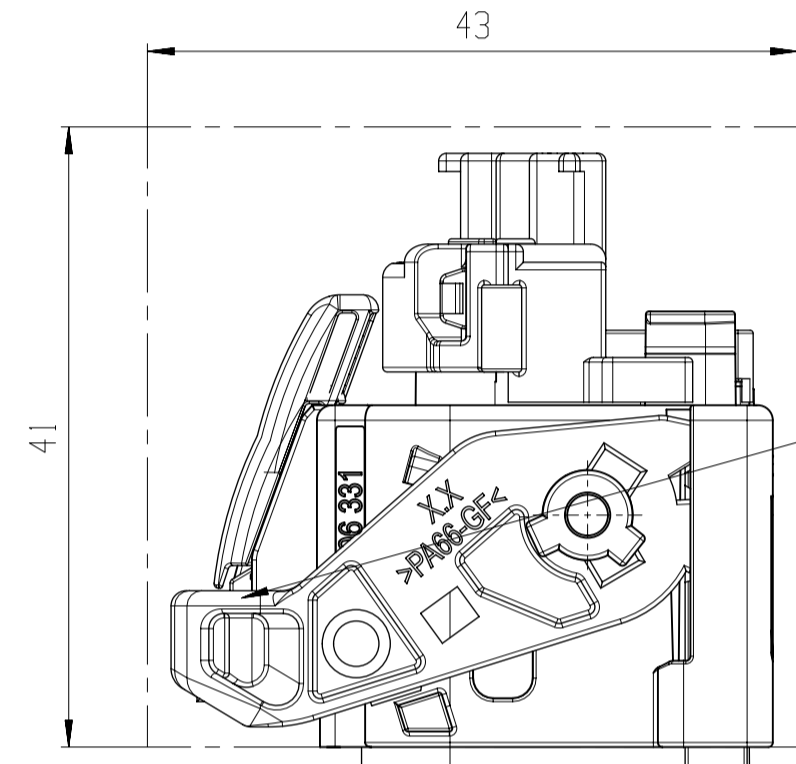


(2:1)



DEFINITION OF REQUIRED CLEARANCE  
Definition des erforderlichen Freiraums

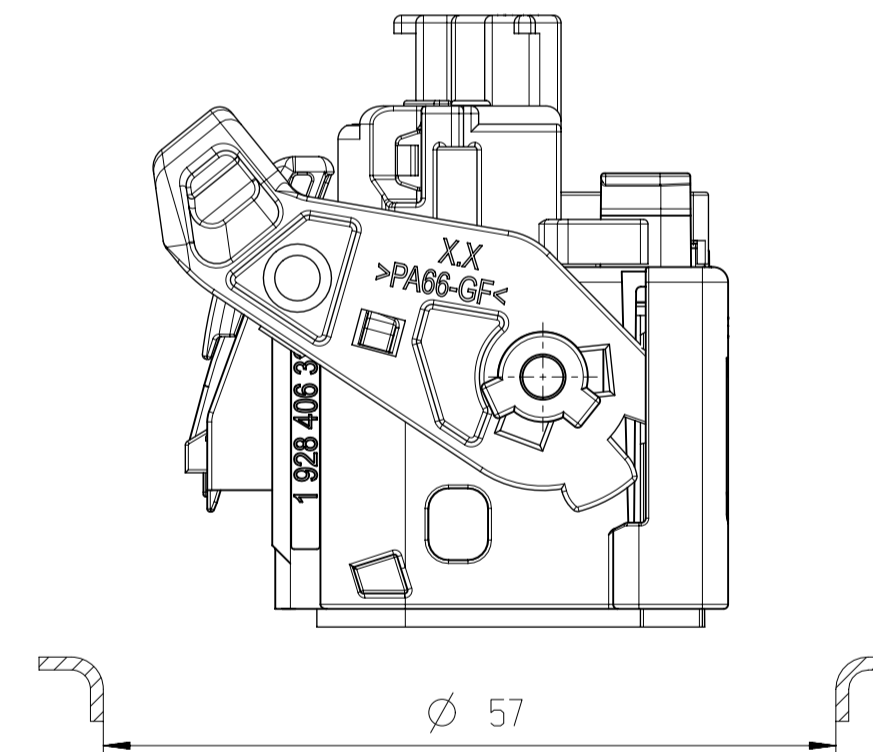
(2:1)



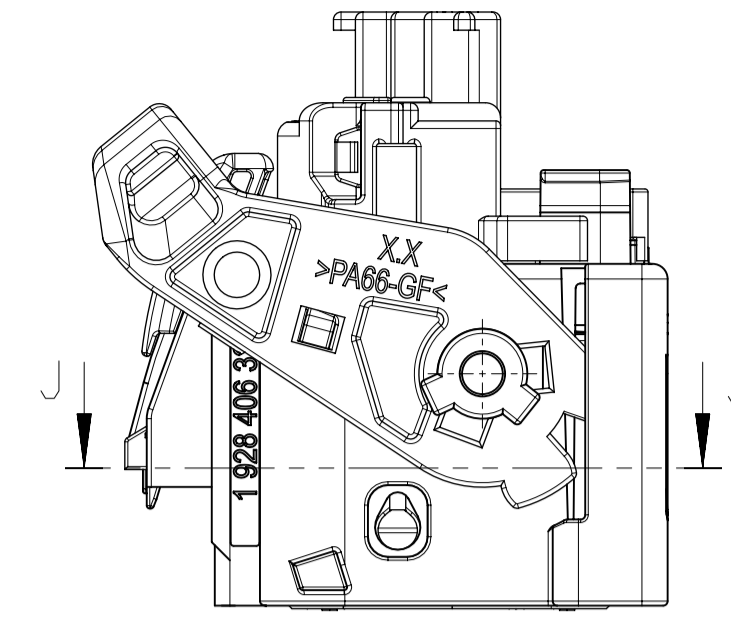
CONNECTOR IN CLOSED POSITION  
Steckverbindung in geschlossener Position

REQUIRED PASSAGE OPENING  
Erforderliche Durchfuhrungsoeffnung

(2:1)

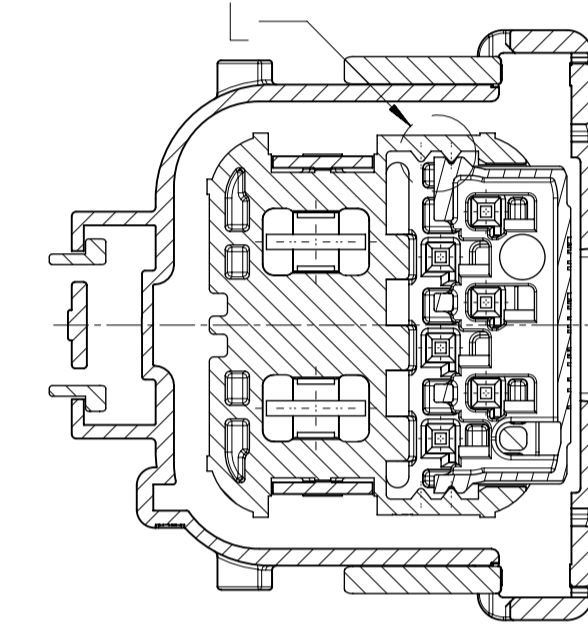


(2:1)

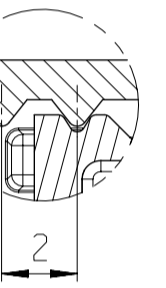


SECONDARY LOCKING IN OPENED POSITION  
Sekundaerverriegelung in geoeffneter Stellung

J-J  
(2:1)

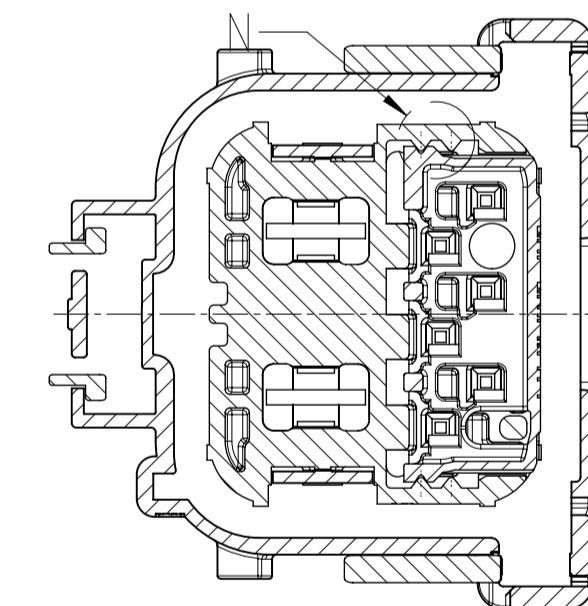


L 5:1

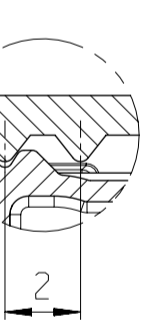


SECONDARY LOCKING IN CLOSED POSITION  
Sekundaerverriegelung in geschlossener Stellung

J-J  
(2:1)



N 5:1



TERMINALS AND ACCESSORIES / Kontakte und Zubehoer

TERMINALS Kontakte			SINGLE WIRE SEALS Einzeladerdichtungen			DUMMY PLUGS Blindstopfen		CRIMPING TOOL Crimpwerkzeug		CRIMPING PLIERS Crimpzangen		DISASSEMBLY TOOLS Demontagewerkzeuge	
BTL 4.8	1 928 499 632	6.0	4.0 - 4.5 (FLR-B)	SILVER PLATED versilbert	1 928 301 695	GREEN gruen	1 928 301 208	BLACK Schwarz	1 928 499 412	1 928 499 411	1 928 498 716	PS/SWW-CO	
AMP MCP 6.3/4.8K	2-1241418-3	A 6.0	4.0 - 4.3 (FLRI)	SILVER PLATED versilbert	1719043-1	GREEN gruen	967652-1	TRANSPARENT transparent	x-2151466-x	3-1579021-7	1-1579007-3	TE	
MOS 0.6	5-965906-6	D 0.50 - 0.75	1.4 - 1.9 (FLRI)	SILVER PLATED versilbert	967067-1	GREEN gruen	967056-1	BLUE blau	2151038 x-878799-x	5-1579001-1 5-1579001-8	6-1579007-1	TE	
TERMINAL Kontakt	ORDER-NO. Bestell-Nr.	REV.	WIRE SIZE RANGE Leitungsquerschnitt (mm²)	INSULATION- Isolations- Ø	SURFACE CONTACT AREA Oberflaeche Kontaktierbereich	ORDER-NO. Bestell-Nr.	COLOR Farbe	ORDER-NO. Bestell-Nr.	COLOR Farbe	ORDER-NO. Bestell-Nr.	ORDER-NO. Bestell-Nr.	SUPPLIER Lieferant	

PROCESSING SPECIFICATION / Verarbeitungsvorschrift

BTL 4.8:	1 928 A00 02V
AMP MCP 6.3/4.8:	114-18388 Rev. E
MOS 0.6:	114-18025 Rev. T

general tolerances for All / allgemeine Toleranzen fuer			
lin. dim./L-masse	radii/Radien	angles/Winkel	
±1mm	±1mm	±5°	
all linear dimensions in / Alle Laengennisse in mm			
Size acc. to / Masse nach ISO 14405-1:2010-12			
envelope principle/ Huellprinzip		©	
drawing standard/ Zeichnungsstandard		ISO Standard	

081 3E1001900	20190624	hds&kr	wdm3ba	kat1alc	209	PS-AM/ENC	.
07 3E10020219	20190514	sse2fe	wdm3ba	kat1alc	209	PS-AM/ENC	.
06 3E10014041	20190405	sse2fe	vlp2bj	kat1alc	209	PS-AM/ENC	.
01 NEW EDITION	20161109	tar81hc	hga2_ju	kat1alc	209	G5-AM/ENC	.
Ind. Change/Änd.	YYYYMMDD	Drawn/Gez.	Checked/Gepr.	Released/Freig.	BWN	Resp. dept./Verantw. Abt.	Add. info./Zus. Info.
Lang./Spr.	Syst.	Night./Dev.	PLUG-IN CONNECTOR STECHEVERBINDUNG		8-WAY 8-polig	Sheet/Bl.	2 / 2
env/de	UG	Scale/Verst.	5:1		<b>BOSCH</b>	Doc. type AGZ	1 928 A00 815-000
ENR		Scale/Verst.	5:1		OFFER DRAWING ANGEBOTSZEICHN.	Repl. For	DP/DT Ind. Form. 001 08 A1