

SOLIS G

LED Hallenstrahler für die Beleuchtung von Industrieflächen IP44 oder IP65

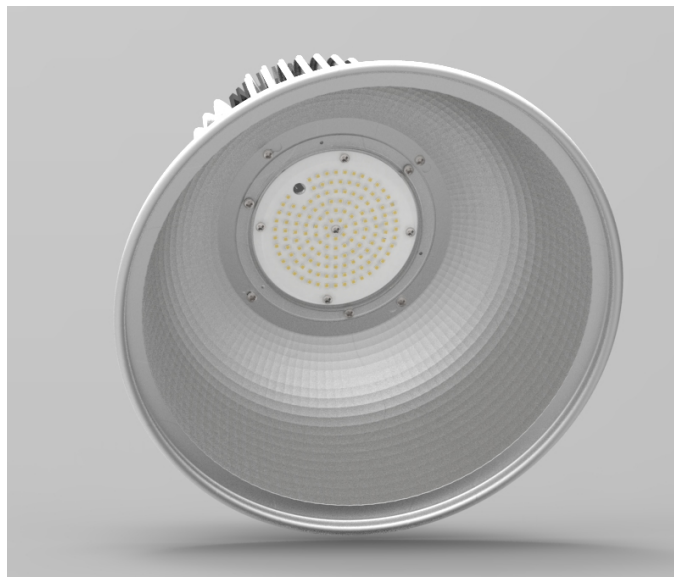
LED High Bay for lighting industrial areas IP44 or IP65

Außengehäuse aus gepresstem Aluminium, Epoxidharz lackiert und vorbehandelt durch Verchromung. Damit höchste Korrosionsbeständigkeit. Glas schlag zäh und thermisch stabilisiert. Sicherungsring aus verzinktem Stahl mit Öffnungsgriff sowie Sicherheitsverschluss und Silikon Dichtungen. Facettenspiegel und Außen: eloxiertes Aluminium .
Loses Anschlusskabel. Stromversorgungsmöglichkeiten: Fest verbauter elektronischer LED-Treiber der Marke Meanwell HBG version.

Reflektor aus hochreinem Aluminium 99.85%, innen Facetten poliert um höchste Lichtströme zu erzielen .
Lichtquelle LED. Direkt strahlend.
Decken Befestigungssystem durch verzinkten Schraubhaken.
Nur für den Inneneinsatz.

Auf Anfrage:

- IP65
- Vom Standard abweichende Lichtfarbe.
- Vom Standard (90°) abweichende Abstrahlwinkel



Turned sheet aluminium body painted with epoxy powder after phoshating high resistance corrosion with Phosphochromatizing treatment.
Tempered transparent thermal anti-shock glass.
Fixing ring in galvanized plate with opening handle and safety lock.
Silicon gasket.

Heat-sink: die casting anodized aluminum

free cable. Built-in electronic ballast, **Meanwell HBG**.

Turned aluminum reflector 99.85% that is oxidised anodised and **facettes** polished to a high luminous efficiency.

Direct Light emission.

Suspension mounting system with galvanised steel hook. Not suitable for outdoor application.

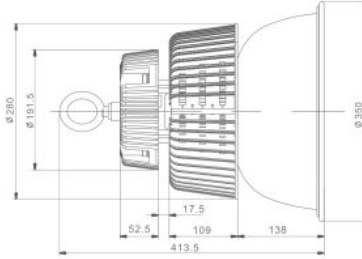
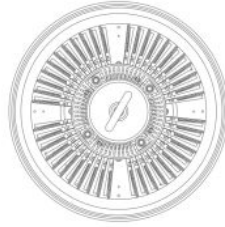
On request

- IP65
- LED color temperature K different from specified one.
- different mirrors

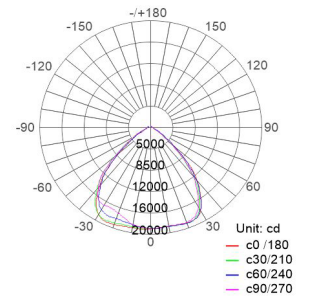






SOLIS G





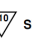
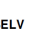

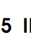
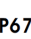





Distribution Curve of Meridian



lumen*	watt**	Ta***	K Kelvin	Lebenserwartung hours duration	Gewicht weight	Artikel Nr. code	Stromversorgung power supply	Gehäusefarbe color
11.000 lm	80 W	-20° +40°	4.000 K	50.000	3,9 Kg	S-HBG-80W4	CAE elettronica electronic MEANWELL HBG 	02 nero black
14.000 lm	100 W	-20° +40°	4.000 K	50.000	3,9 Kg	S-HBG-100W4		
18.000 lm	130 W	-20° +40°	4.000 K	50.000	3,9 Kg	S-HBG-130W4		
20.000 lm	150W	-20° +40°	4.000 K	50.000	4,1 Kg	S-HBG-150W4		
28.000 lm	200 W	-20° +40°	4.000 K	50.000	4,5 Kg	S-HBG-200W4		
34.000 lm	240 W	-20° +40°	4.000 K	50.000	4,5 Kg	S-HBG-240W4		

lumen*	watt**	Ta***	K Kelvin	Lebenserwartung hours duration	Gewicht weight	Artikel Nr. code	Stromversorgung power supply	Gehäusefarbe color
12000 lm	80 W	-20° +40°	6.000 K	50.000	3,9 Kg	S-HBG-80W6	CAE elettronica electronic MEANWELL HBG 	02 nero black
15.000 lm	100 W	-20° +40°	6.000 K	50.000	3,9 Kg	S-HBG-100W6		
18.800 lm	130 W	-20° +40°	6.000 K	50.000	3,9 Kg	S-HBG-130W6		
21.000 lm	150W	-20° +40°	6.000 K	50.000	4,1 Kg	S-HBG-150W6		
29.000 lm	200 W	-20° +40°	6.000 K	50.000	4,5 Kg	S-HBG-200W6		
35.000 lm	240 W	-20° +40°	6.000 K	50.000	4,5 Kg	S-HBG-240W6		

Zubehör accessories

Artikel code

Spiegel (Abstrahlwinkel). Mirror (viewing angle).

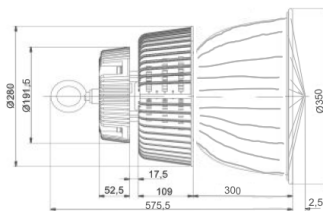
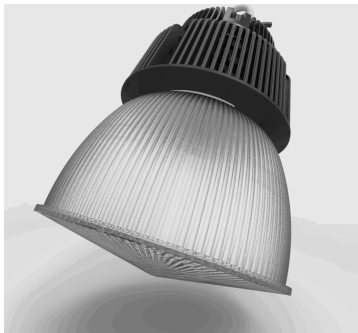
25°, 45°, 60°, 90°(standard mitgeliefert), 120°

Mattiertes Glas (zentraler Entblendungsring). Sanded glass.(Central antiglare ring)

S-HBG-Matt

Spiegel aus PMMA (zentraler Abstrahlwinkel 90°). Mirror made by PMMA (central light distribution angle 90°).

S-HBG-Acryl



* Lumen ermittelt bei 25° (lumen max. 65° minus 10%). Die genaue Totale Lichtmenge kann abweichen. Nominal lumen max 25° luminaire total light flux refer to luminaire performance.

** Watt Kompletterverbrauch incl. Treiber Watt power totally absorbed.

*** Ta minimale und maximale Umgebungstemperatur. Ta minimum and maximum ambient operating temperature.