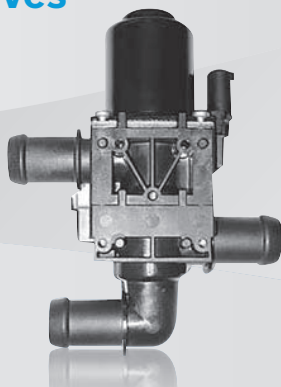


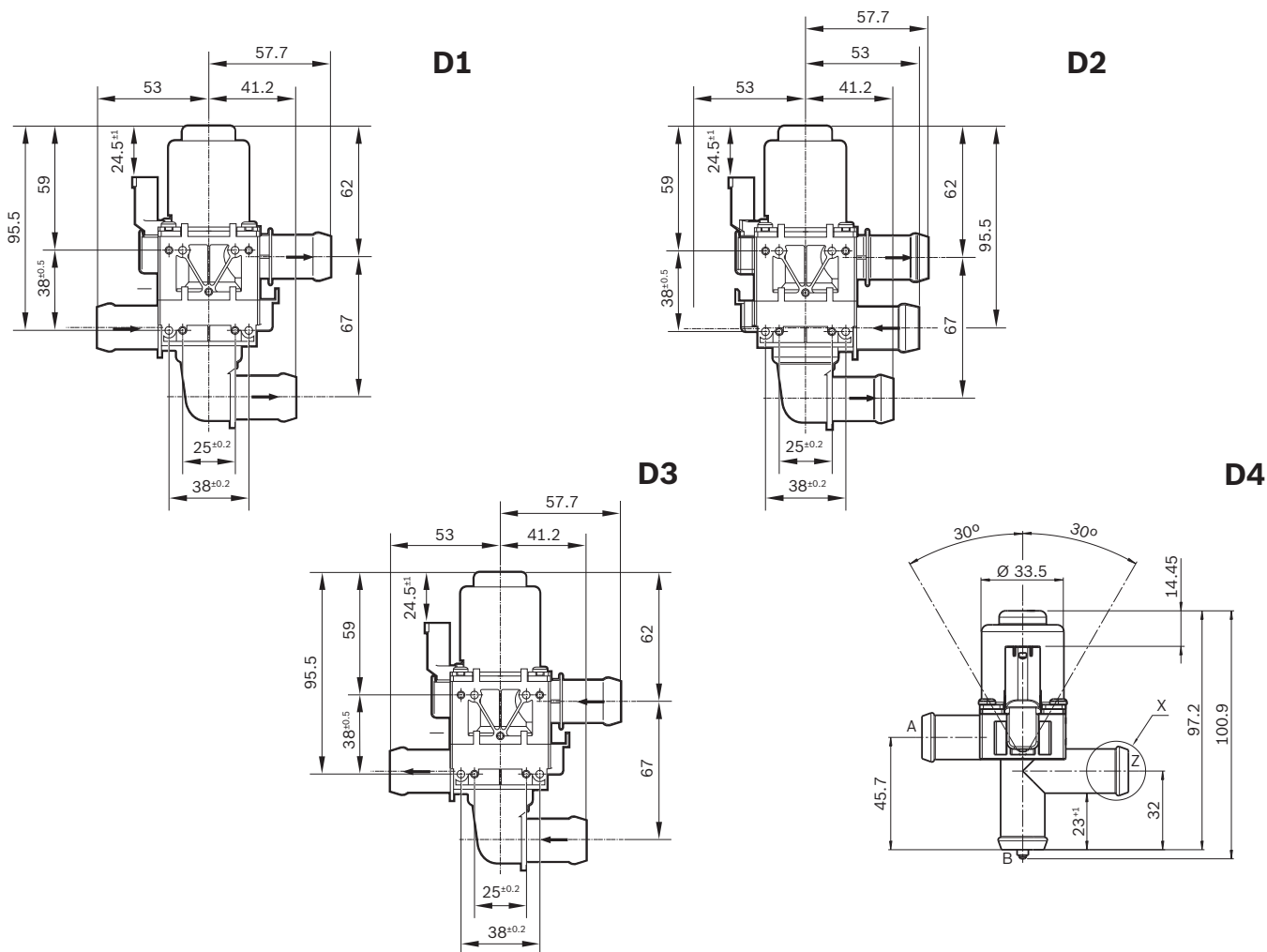
## Switch-over valves



### Family features:

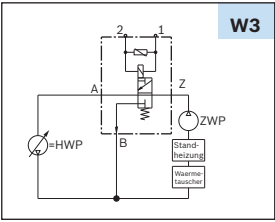
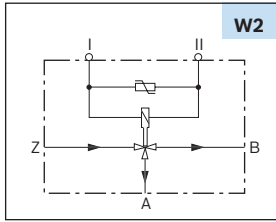
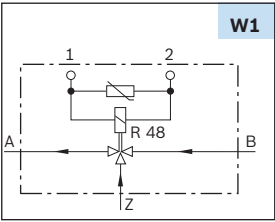
- ▶ Proportional valve function possible
- ▶ Degree of protection: IP5K4
- ▶ Open when de-energized

Voltage	Part number	Pressure drop	Flow rate	Switchable pressure difference	Resistance	Dimensional drawing (D)	Wiring diagram (W)	Connector (C)	Performance curve (P)
		kPa	L/hr	kPa	Ω				
12 V	1 147 412 207	45	1500	160	12.4	D3	W1	C1	P1
	1 147 412 211	45	1500	160	12.4	D1	W2	C1	P2
	1 147 412 213	45	1500	160	12.4	D2	W2	C1	P2
	1 147 412 282	35	1500	100	15.3	D4	W3	C1	-
24 V	1 147 412 202	45	1500	160	48	D1	W2	C1	P2
	1 147 412 204	45	1500	160	48	D3	W1	C1	P1

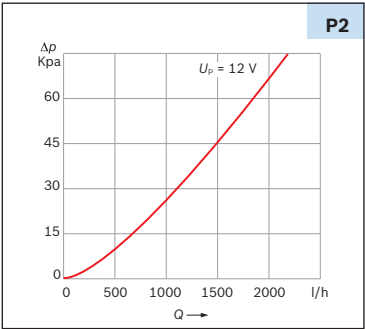
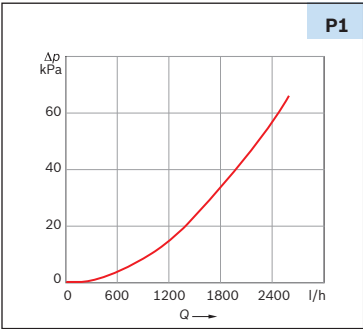


# Switch-over valves

## Wiring diagram (W)



## Performance curve (P)



## Mating connector (C)

