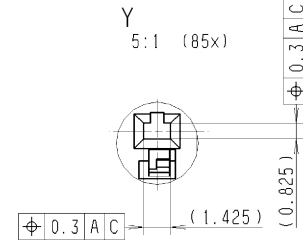
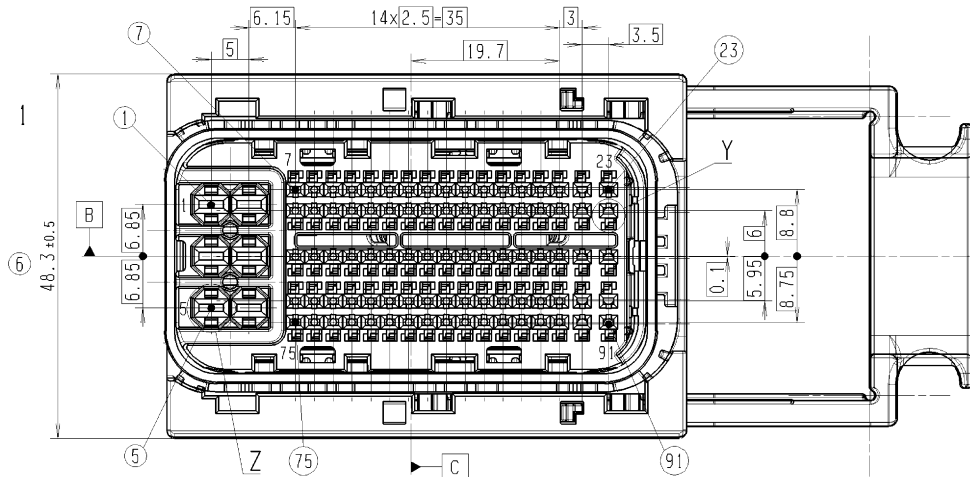
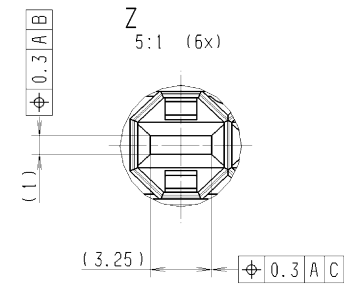


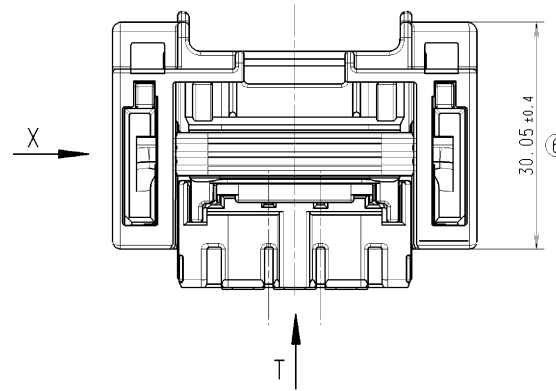
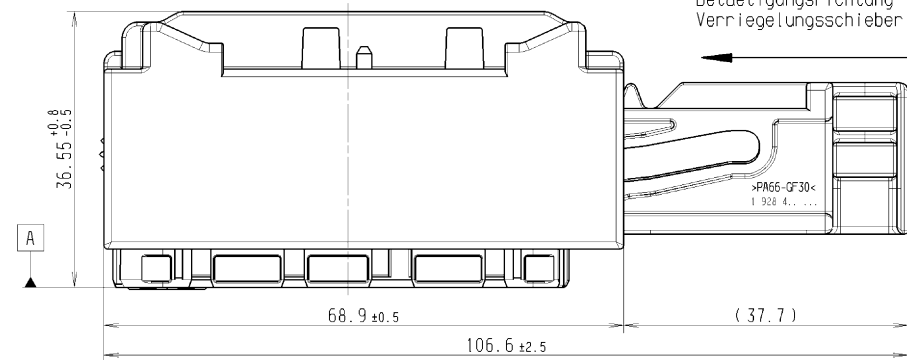
CODE-NUMBER Kodierungs-Nr.	1	2	3	4	5	6	7	8	16
CODING VARIANTS Kodierungs-varianten									
1:1 SIMPLIFIED PRESENTED vereinfacht dargestellt									
DIFFERENT CODINGS ARE FORMED BY INTERCHANGEABLE INSERT. Verschiedene Kodierungen werden durch Wechseleinsetze gebildet.									
• ... INTERCHANGEABLE INSERT EXISTS ... Wechseleinsetze vorhanden									
ORDER NO. Bestell-Nummer	1 928 405 452 •								

PRESENTED: CODE 1
dargestellt: Kodierung 1



5	GASKET Mattendichtung	VMO 30	TRANSPARENT transparent	
4	LOCKING SLIDE Verriegelungsschieber	PA 66 - GF 30	BLACK schwarz	
3	RADIAL SEAL Radialdichtung	VMO 30	ORANGE orange	
2	CONTACT HOUSING UPPER PART Kontakttraegeroberteil	PA 66 - GF 30	BLACK schwarz	
1	CONTACT HOUSING LOWER PART Kontakttraegerunterteil	PA 66 - GF 50	BLACK schwarz	
ITEM Pos.	DESIGNATION Benennung	MATERIAL Stoff	COLOUR Farbe	REMARKS Bemerkungen

OPERATING DIRECTION OF LOCKING SLIDE
Betaetigungsrichtung Verriegelungsschieber

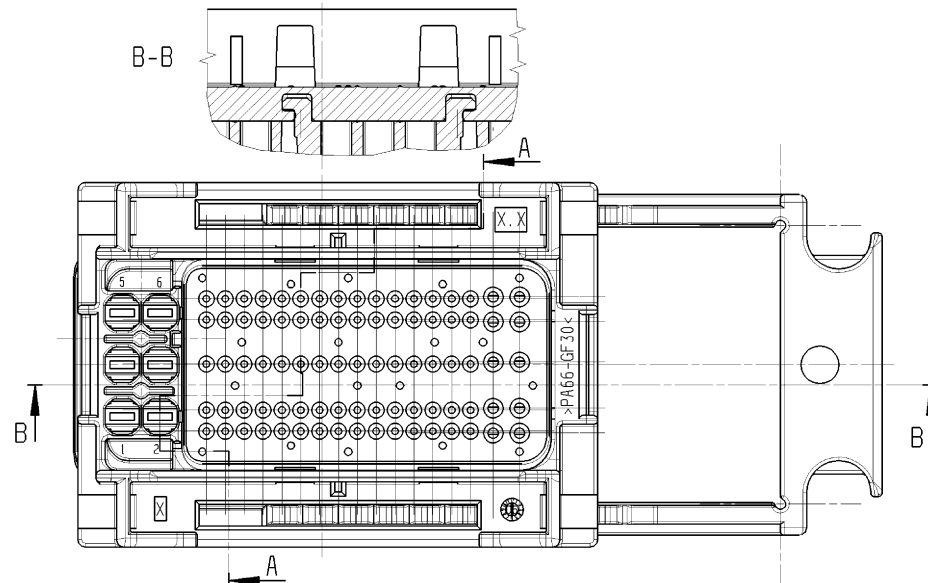
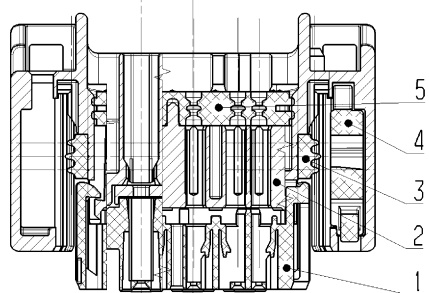


... CAVITY NUMBER
... Kammernummer

PARTS MAY DIFFER IN NON-FUNCTIONAL DETAILS FROM THE PRESENTATION IN THIS DRAWING.
Teile koennen in nicht funktionsrelevanten Details von der Darstellung in der Zeichnung abweichen.

[INCIDENCE OF 1mm PER SIDE IS PERMITTED.
Einfall von 1mm je Seite ist erlaubt.]

A-A
90° TURNED PRESENTED
90° gedreht dargestellt



X 1:1
DELIVERY CONDITION
Auslieferungszustand

ORDER NO. SEE TABLE
Bestell-Nr. s. Tabelle

83.1 ± 2.5

BOSCH 1 928 405 452

PRODUCTION DATE YY-MM-DD
Herstellungsdatum JJ-MM-TT

LOCKING SLIDE CLOSED
Verriegelungsschieber geschlossen

06	REV./user	20101119	ac12sf	lux2sf	-	213	GS-AM/ENC2	-
01	LINE EDITION	20070314	Co	Lx	-	213	GS-AM/ENC2	-
Ind.	Change/Amend.	YYYYMMDD	Drawn/Gez.	Checked/Copr.	Released/Freig.	BWN	Resp. dept./Verantw. Abt.	Add. Info./Zus. Info.
en/de	CAT	-	Scale/M.stab	2:1	OFFER DRAWING ANGEBOTSZEICHN.	AGZ	CONTACT HOUSING UNIT Kontakttraegerereinheit	91-WAY 91-pol.
Doc. type	1 928 A00 469	DP/TO	Ind.	06	Sheet/Bl.	1 / 1	Format	A1
Repl. for	-	Repl. by	-	-	-	-	-	-

This drawing is the exclusive property of Bosch Power Tools GmbH. It may not be reproduced or given to third parties.