

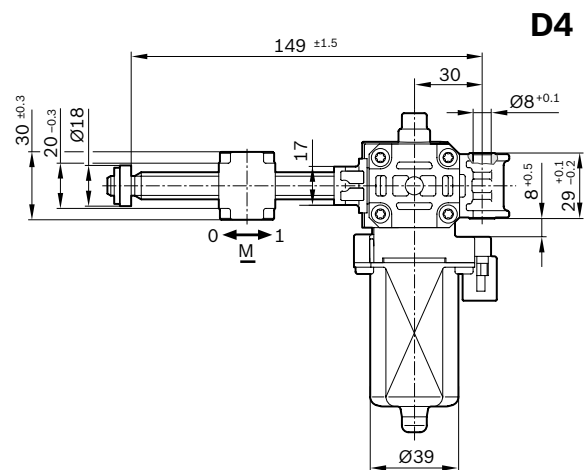
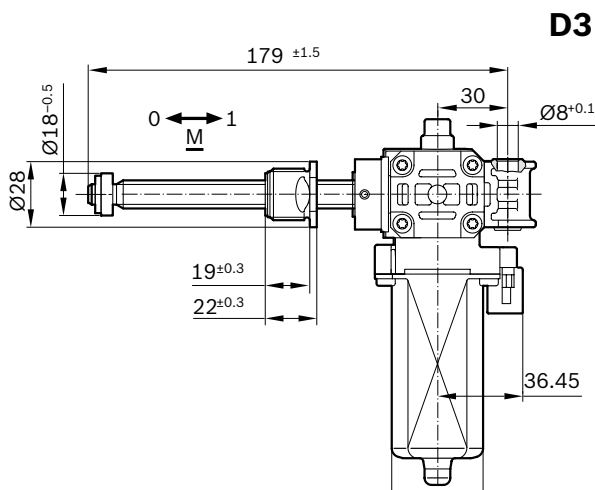
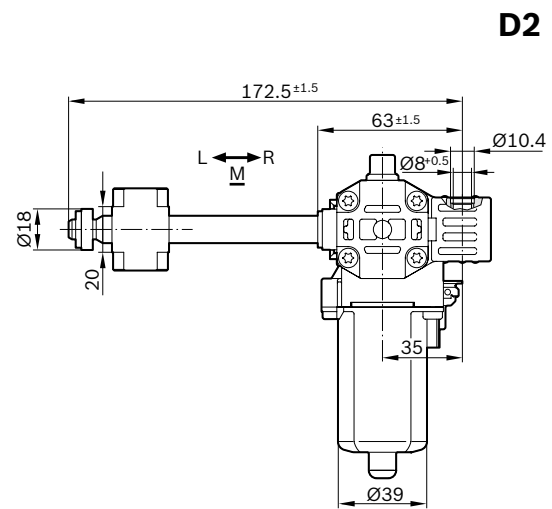
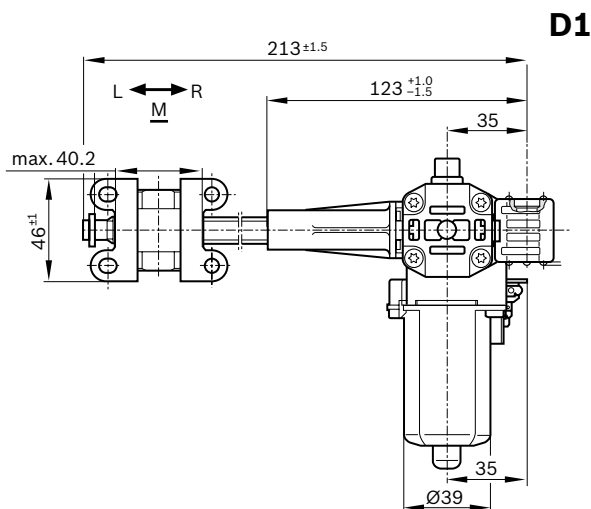
# AHC-RS



### Family features:

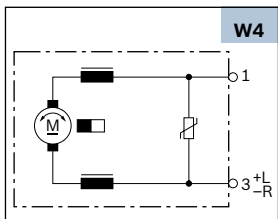
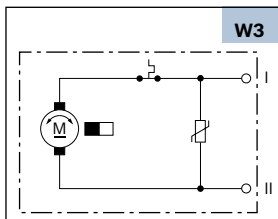
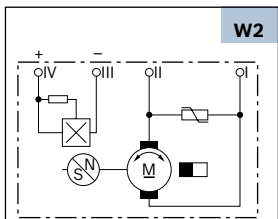
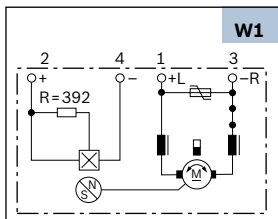
- ▶ Hall Sensor available
- ▶ Degree of protection: IP 50
- ▶ Operation mode: S2 - S3
- ▶ Linear movement

	Part number	I <sub>n</sub> (Nominal current)	F <sub>n</sub> (Nominal force)	F <sub>max</sub> Maximum force	Adjustment speed	Stroke	Signal	Dimensional drawing (D)	Wiring diagram (W)	Connector (C)	Performance curve (P)
		A	kN	kN	mm/s	mm	Hall				
<b>12 V</b>	0 390 203 229	9	0.5	3	13	81.6	Yes	D3	W1	C3	P3
	0 390 201 927	3	0.5	3.4	5.2	58.5	Yes	D1	W2	C1	P1
	0 390 201 941	3.9	0.5	4.5	7.2	75	No	D2	W3	C2	P2
	0 390 203 232	8.5	0.5	3.7	13.5	81.6	No	D3	W4	C4	P5
	0 390 201 989	6	0.5	4.25	7	58.5	Yes	D4	W1	C3	P4

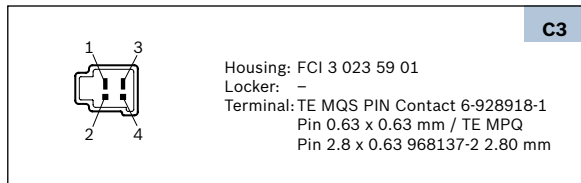


# AHC-RS

## Wiring diagram (W)



## Mating connector (C)



## Performance curve (P)

