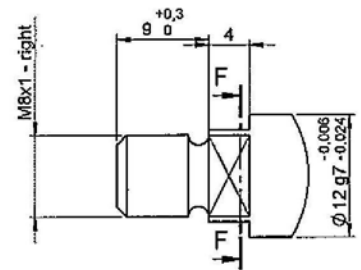
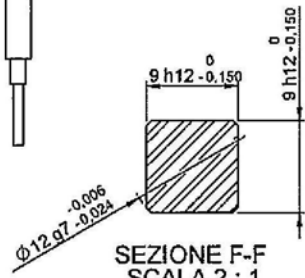


Cable Red/Black VARPEN  
S=6mmq L=150mm

Terminals: Insulated Female 6.3mm faston



DETTAGLIO E  
SCALA 2 : 1



SEZIONE F-F  
SCALA 2 : 1

**MOTOR SPECIFICATIONS :**

Motor Type:  
Supply Voltage: 12 V  
Power: 400W  
Output Speed: 3400 min-1  
Current: 43 A  
Protection: IP10  
Duty cycle: S1  
Insulation Class: Class F

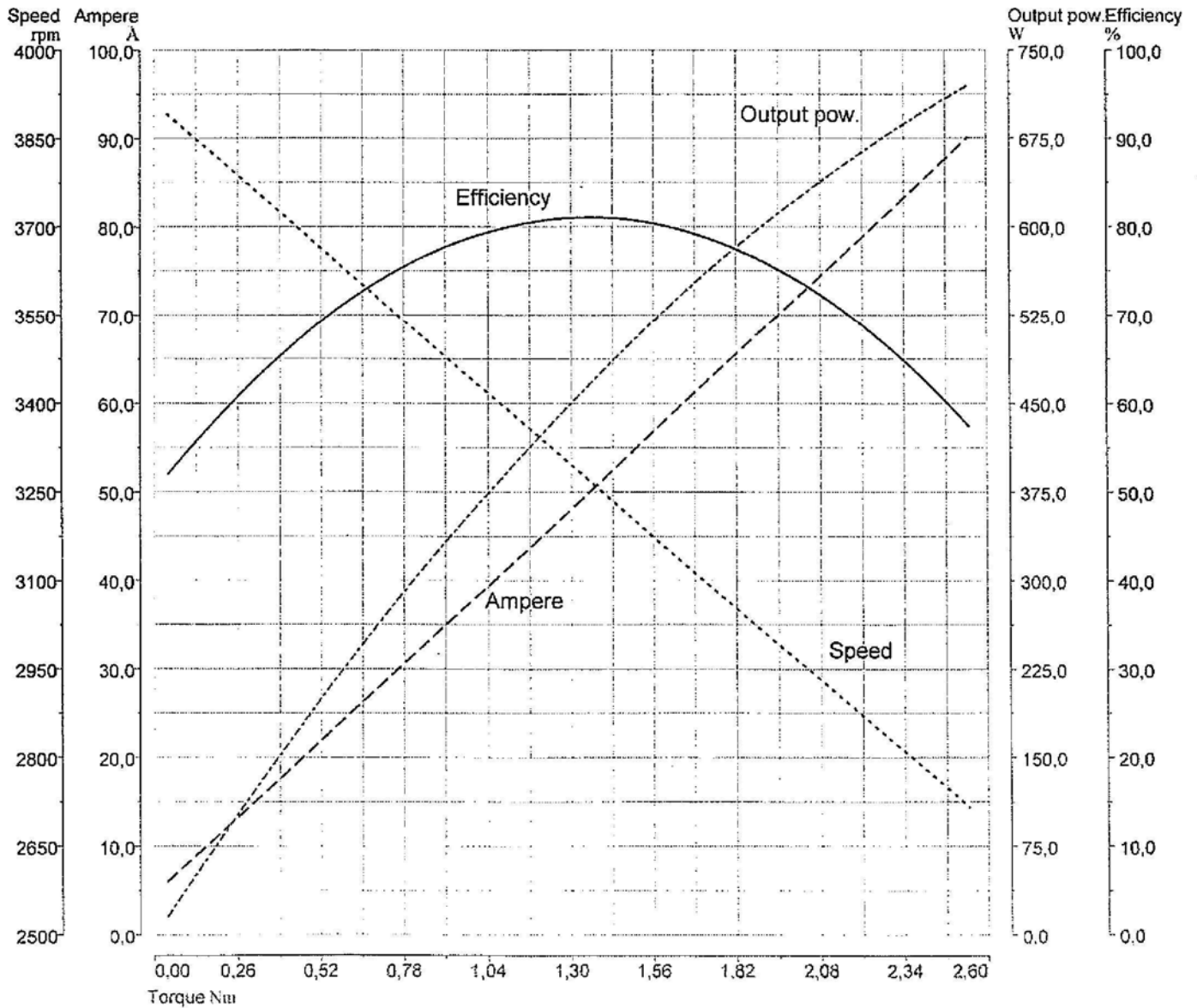
Rotation Clockwise with (+) Red / (-) Black looked from Y

MODIFICHE	MODIFICA N°				DO NOT SCALE DRAWING	REVISIONE:
	DATA				DESCRIZIONE:	
	REMA				Motor 12V 400W 3400G IP10 S1	
	DISEGNIATO DA:	Contiero N.	DATA:	22/12/2011		
	CONTROLLATO DA:					
	APPROVATO DA:					
Classe di tolleranza per pezzi meccanici UNI ISO 22768-III					MATERIALE:	CODICE PRODOTTO:
					WGHT: Kg	SCALE: 1:1
					SHEET 1 OF 3	

A3

## MOTOR SPECIFICATIONS

CUSTOMER	IBS_GRUPPE	CUSTOMER CODE		MOTOR PART NUMBER	
ORDER REF.		BATCH NUMBER		REGISTRATION NUMBER	1
MOTOR MODEL		FORM FACTOR	1	STRUCTURAL FORM	SPECIAL
INSULATION CLASS	F	PROTECTION	IP10	DUTY CYCLE	S1
REDUCTION RATIO		APPLICATION		NO LOAD CURRENT (Amp)	5
RATED VOLTAGE (Volt)	12	NO LOAD SPEED (rpm)	3900	NOMINAL CURRENT (Amp)	43
NO LOAD POWER (Watt)	61	NOMINAL SPEED (rpm)	3400	NOMINAL TORQUE (Nm)	1,2
OUTPUT POWER (Watt)	400	EFFICIENCY (%)	78,4		
AMBIENT TEMP. (°C)	19	TEST DATE	09/12/11	TESTER	ZERBATO GIANLUCA



Date: 22 DIC. 2011      Tester: *[Signature]*      Technical: *[Signature]*