

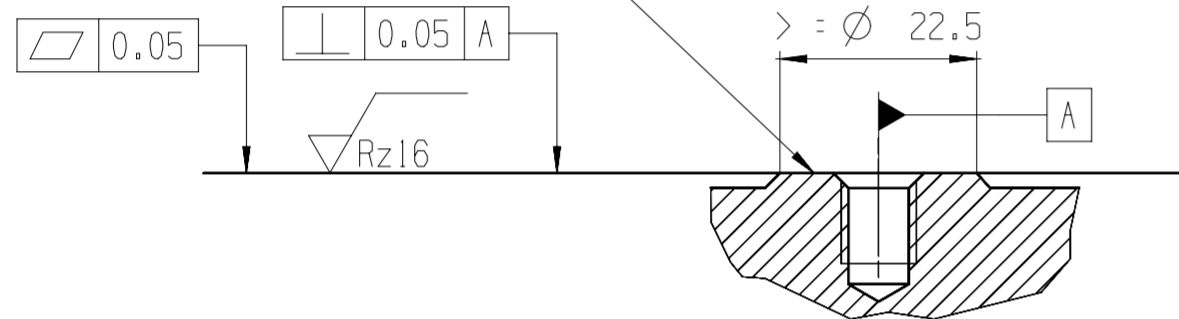
MOUNTING SPECIFICATION FOR KNOCK SENSORS

OPERATION TEMPERATURE RANGE -40° C ... +150° C

FIXING BOLT
 M8x30-8.8 (ALUMINIUM ENGINE BLOCK)
 M8x25-8.8 (CAST IRON ENGINE BLOCK)

ONLY THE METALLIC PART OF THE SENSOR MAY HAVE CONTACT WITH THE ENGINE (NO WASHER HAS TO BE USED)

CONTACT FACES MUST BE FREE OF DIRT AND LUBRICANT
 ENGINE BLOCK REQUIREMENT, CONTACT FACE FOR KNOCK SENSOR



MOUNTING TORQUE 20 ± 5 Nm OILED POSSIBLE, NOTICE STABILITY OF ENGINE BLOCK

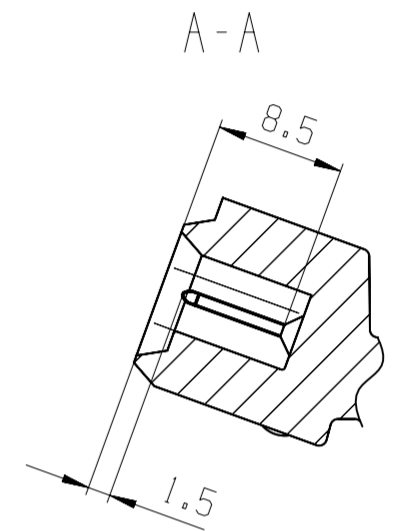
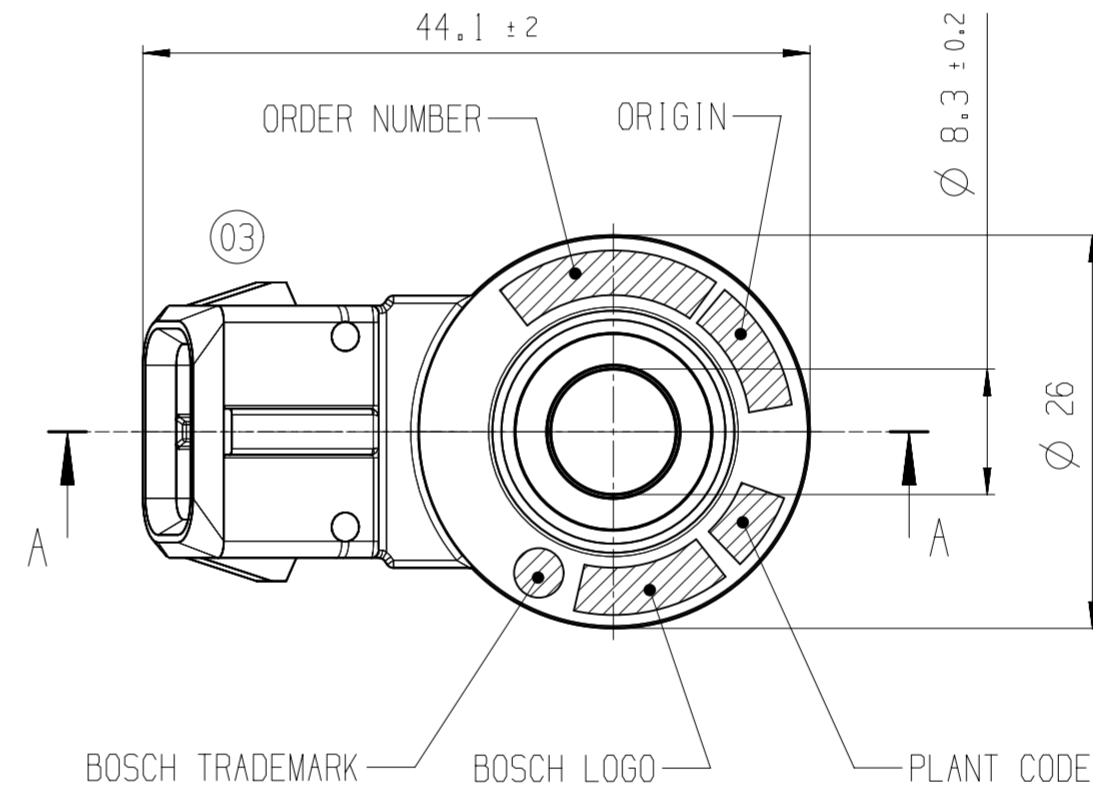
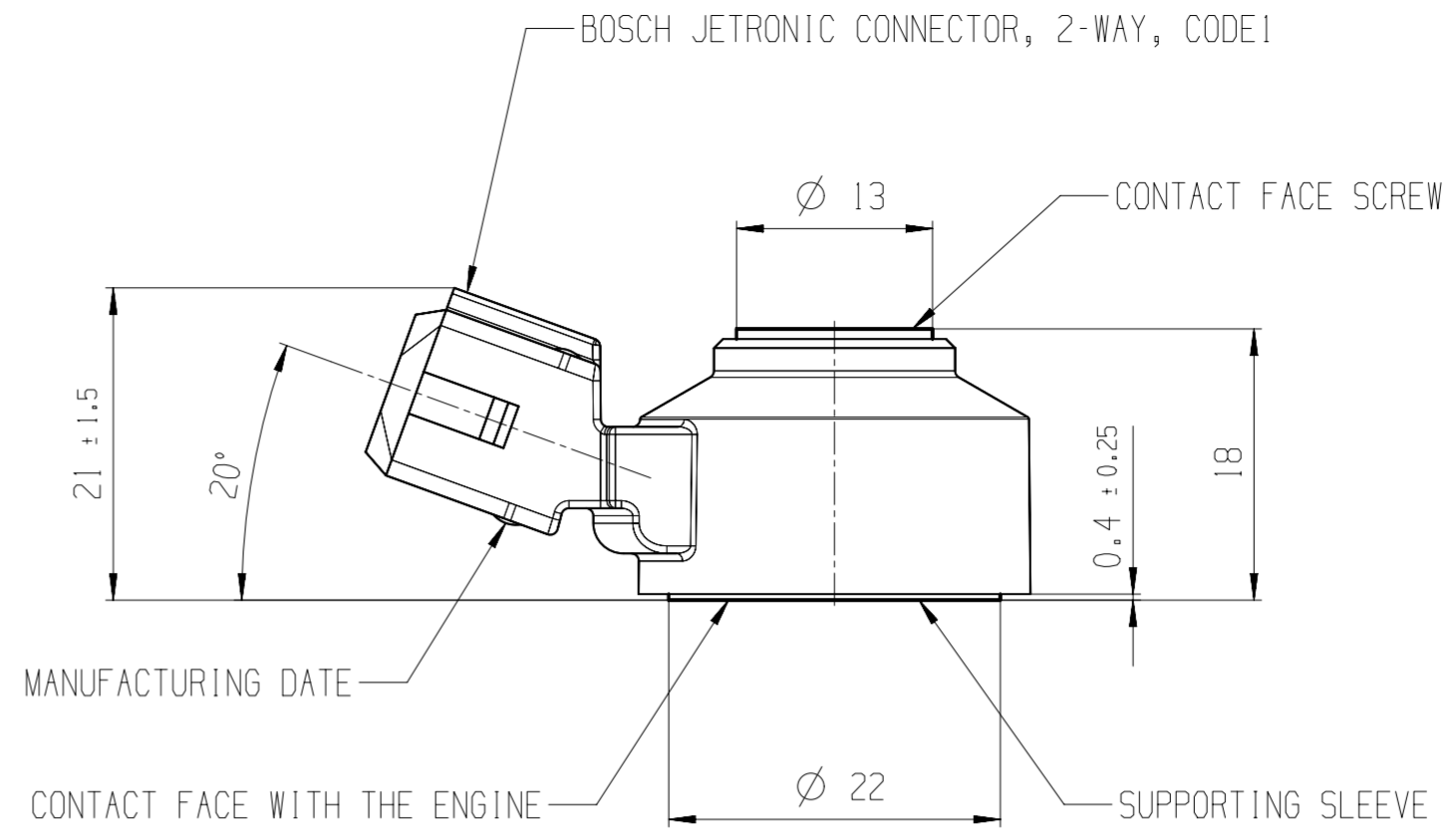
MOUNTING POSITION RANDOM

MATING CONNECTORS BOSCH JETRONIC 2-WAY, CODE 1, ACCORDING A 928 000 256
 E.G. ORDER NUMBER 1 928 402 070
 THE CONTACT SURFACE PLATING OF THE MATING CONNECTOR MUST BE ACCORDING THE KNOCK SENSOR CONNECTOR

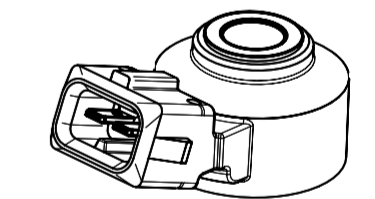
PART	MATERIAL	NORM
HOUSING	POLYAMIDE PA66-GF35 METAL SALT FREE	ISO 1874
SUPPORTING SLEEVE	BRASS CuZn38Pb2	EN 12164
CONNECTOR TERMINAL	BRONZE CuSn6 SURFACE GOLD PLATED	EN 1654

02

0 261 B27 745	0 261 231 300	KS-4-S	0 261 K01 715
DRAFT DRAWING NUMBER	ORDER NUMBER	TYPE	TECHNICAL CUSTOMER DOCUMENT (TCO)



3D VIEW
1:1



02

general tolerances for/Allgemeintoleranzen fuer		
lin. dim./L.-m.asse	radii/Radien	angles/Winkel
±0,5mm	±0,5mm	±5°

confidential/Vertraulich

03	F029004689	20170623	SMP2BJ	GLA2BH	.	2130	DGS-ES/EPR	.
02	F028781888	20150505	SMP2BJ	GLA2BH	.	2130	GS-SI/ENS-Bh	.
01	F028780608	20150320	SMP2BJ	GLA2BH	.	2130	GS-SI/ENS-Bh	.
Ind.	Change/Aend.	YYYYMMDD	Drawn/Gez.	Checked/Gepr.	Releas./Freig.	BWN	Resp. dept./Verantw. Abt.	Add. info./Zus. Info.
Lang./Spr.	Syst.	Wght./Gew.	BOSCH			KNOCK SENSOR		Sheet/Bl.
en/de	UG	co. 44 g	OFFER DRAWING			KLOPFSENSOR		1 / 1
Scale/M.stab		2:1	AGZ			0 261 A27 745-000		DP/ID Ind. Format
MNR			Repl. for			001 03 A2		