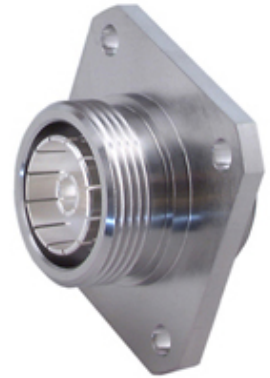


## Within Series Adaptor 37\_716-50-0-1/003\_-

### Description

Panel adaptor jack/jack, flange mount  
7/16 jack (female) / 7/16 jack (female)

Interface standard  
Series 7/16 - IEC 61169-4\_CECC 22190\_DIN 47223\_VG 95250



### Technical Data

#### Electrical Data

Impedance	50 Ω
Interface frequency max.	7.5 GHz
VSWR	DC - 7.5 GHz ≤ 1.03 + 0.01 f (GHz)
Frequency range	DC to 3 GHz
Return loss	≥ 36 dB

#### Mechanical Data

Number of matings	500
Weight	0.1238 kg

#### Environmental Data

Operating temperature	-65 °C to 165 °C
2011/65/EU (RoHS - including 2015/863 and 2017/2102)	compliant

#### Material Data

Interface - 7/16 jack (female)

Piece Parts	Material	Surface Plating
Centre contact	Bronze	Silver Plating
Outer contact	Bronze	Silver Plating
Body	Brass	SUCOPLATE (R) Plating
Insulator	PFA / PTFE	

Interface - 7/16 jack (female)

Piece Parts	Material	Surface Plating
Centre contact	Bronze	Silver Plating
Outer contact	Bronze	Silver Plating
Body	Brass	SUCOPLATE (R) Plating
Insulator	PFA / PTFE	

### Related Documents

Catalogue drawing	DCA-00010012
Mounting hole	DOU-00013593

### Ordering Information

Single package	37_716-50-0-1/003_-E
----------------	----------------------

**Within Series Adaptor**

**37\_716-50-0-1/003\_-**