

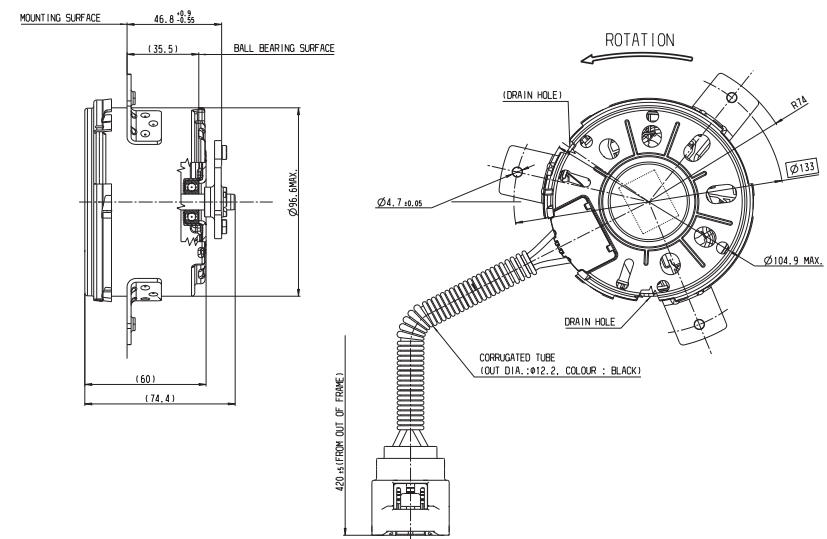
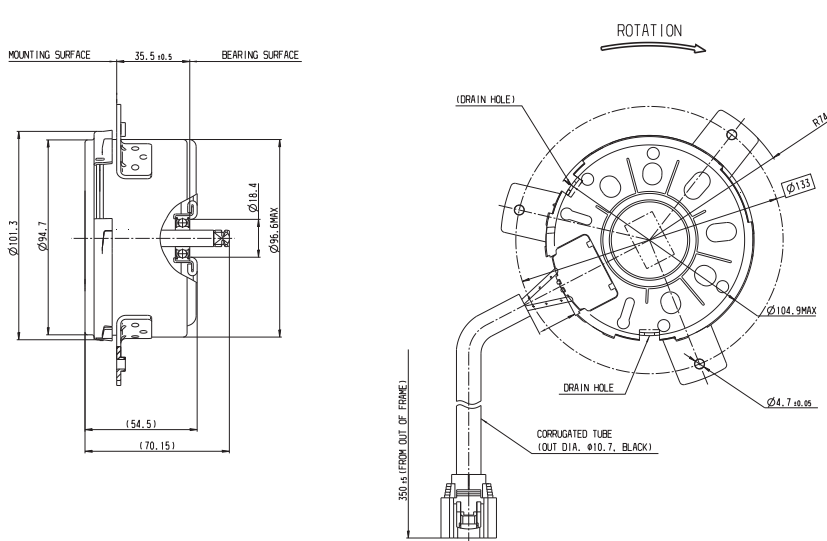
**GPG**



**Family features:**

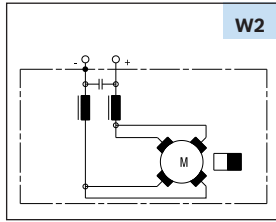
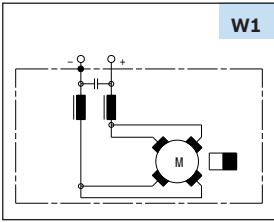
- ▶ High durability and efficiency
- ▶ Degree of protection: IP 10
- ▶ Operation mode: S1
- ▶ Direction of rotation: CW

Voltage	Part number	Pn (Nominal power)	In (Nominal current)	nn (Nominal speed)	Mn (Nominal torque)	Ma (Stall torque)	Signal	Dimensional drawing (D)	Wiring diagram (W)	Drive end (S)	Performance curve (P)
		W	A	rpm	Nm	Nm	Hall				
<b>12 V</b>	3 137 230 306	96,5	11.7	4000	0.50	0.90	No	D1	W1	S1	P1
	3 137 230 308	161.3	20.8	4000	0.80	1.50	No	D2	W2	S2	P2

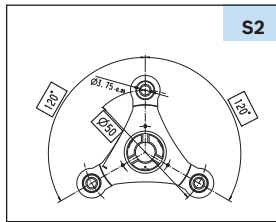
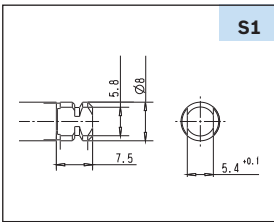


# GPG

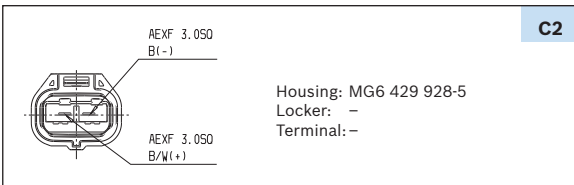
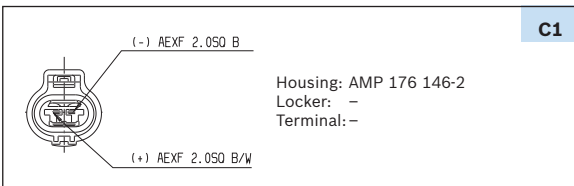
## Wiring diagram (W)



## Drive end (S)



## Mating connector (C)



## Performance curve (P)

