

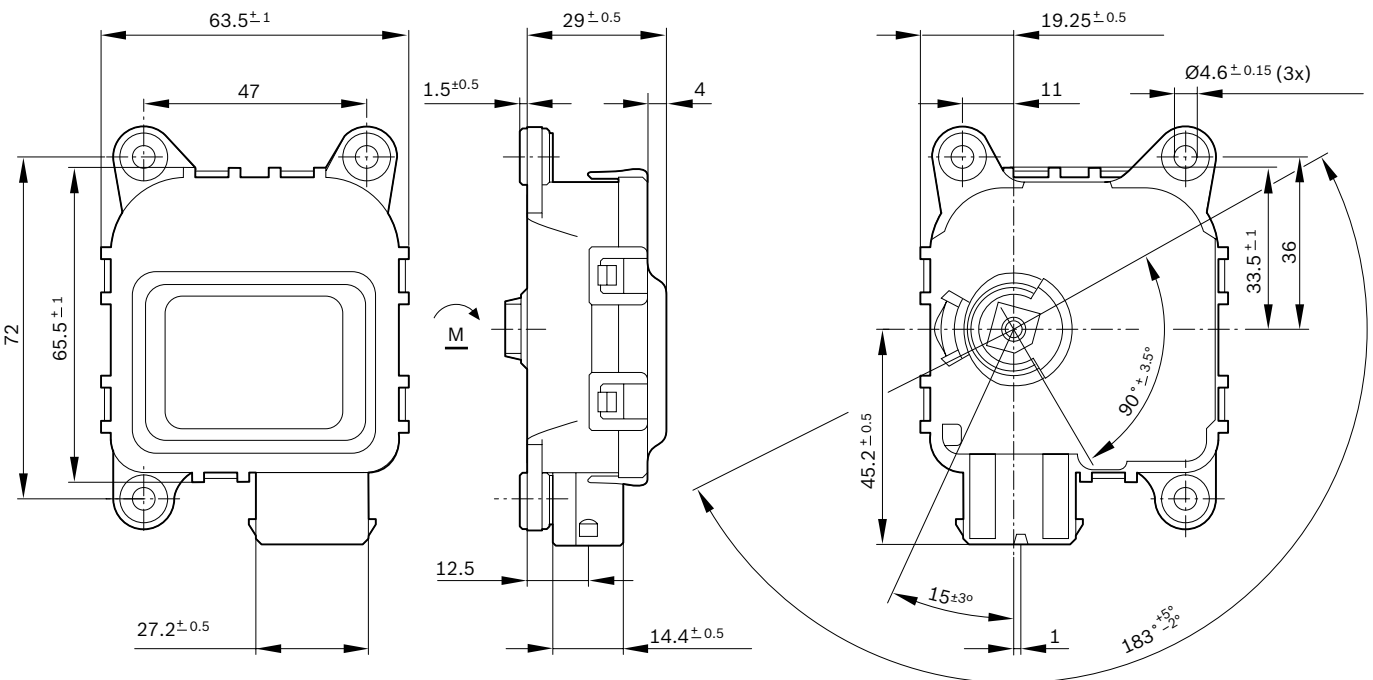
# VMC



### Family features:

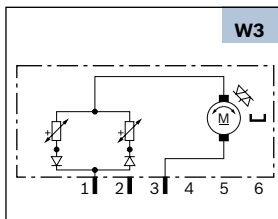
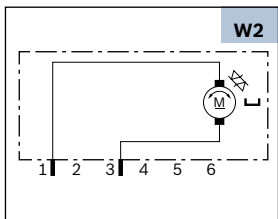
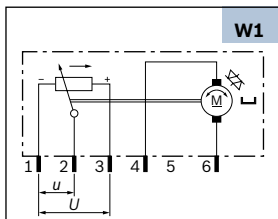
- ▶ With and without potentiometer
- ▶ Degree of protection: IP 40
- ▶ Operation mode: S2
- ▶ Direction of rotation: CCW/CW

Voltage	Part number	P <sub>n</sub>	I <sub>n</sub>	n <sub>n</sub>	M <sub>n</sub>	M <sub>a</sub>	Gear ratio	Direction of rotation	Degree of protection	Signal	Wiring diagram (W)	Drive end (S)	Connector (C)	Performance curve (P)
		(Nominal power) W	(Nominal current) A	(Nominal speed) rpm	(Nominal torque) Nm	(Stall torque) Nm				Poti				
12 V	0 132 801 142	0.3	0.18	7	0.4	0.9	310:1	CCW/CW	IP 40	No	W2	S1	C1	P2
24 V	0 132 801 143	0.3	0.10	6	0.4	0.9	405:1	CCW/CW	IP 40	No	W3	S1	C1	P3
	0 132 801 141	0.3	0.10	6	0.4	0.9	405:1	CCW/CW	IP 54	Yes	W1	S2	C1	P1

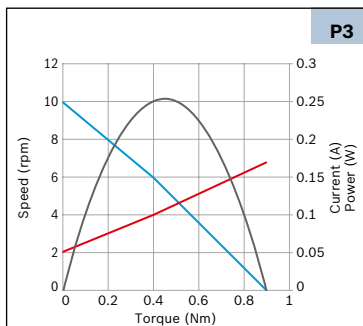
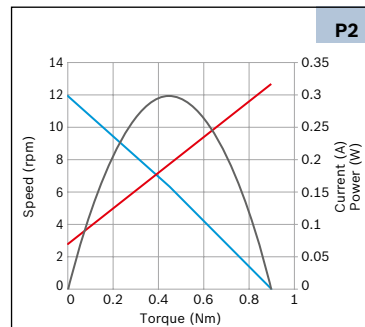
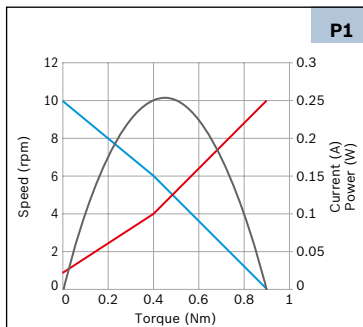


# VMC

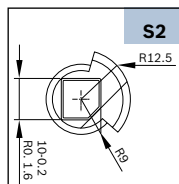
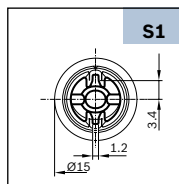
## Wiring diagram (W)



## Performance curve (P)



## Drive end (S)



## Mating connector (C)



## Accessories

